

22°10'0"N

22°10'0"N

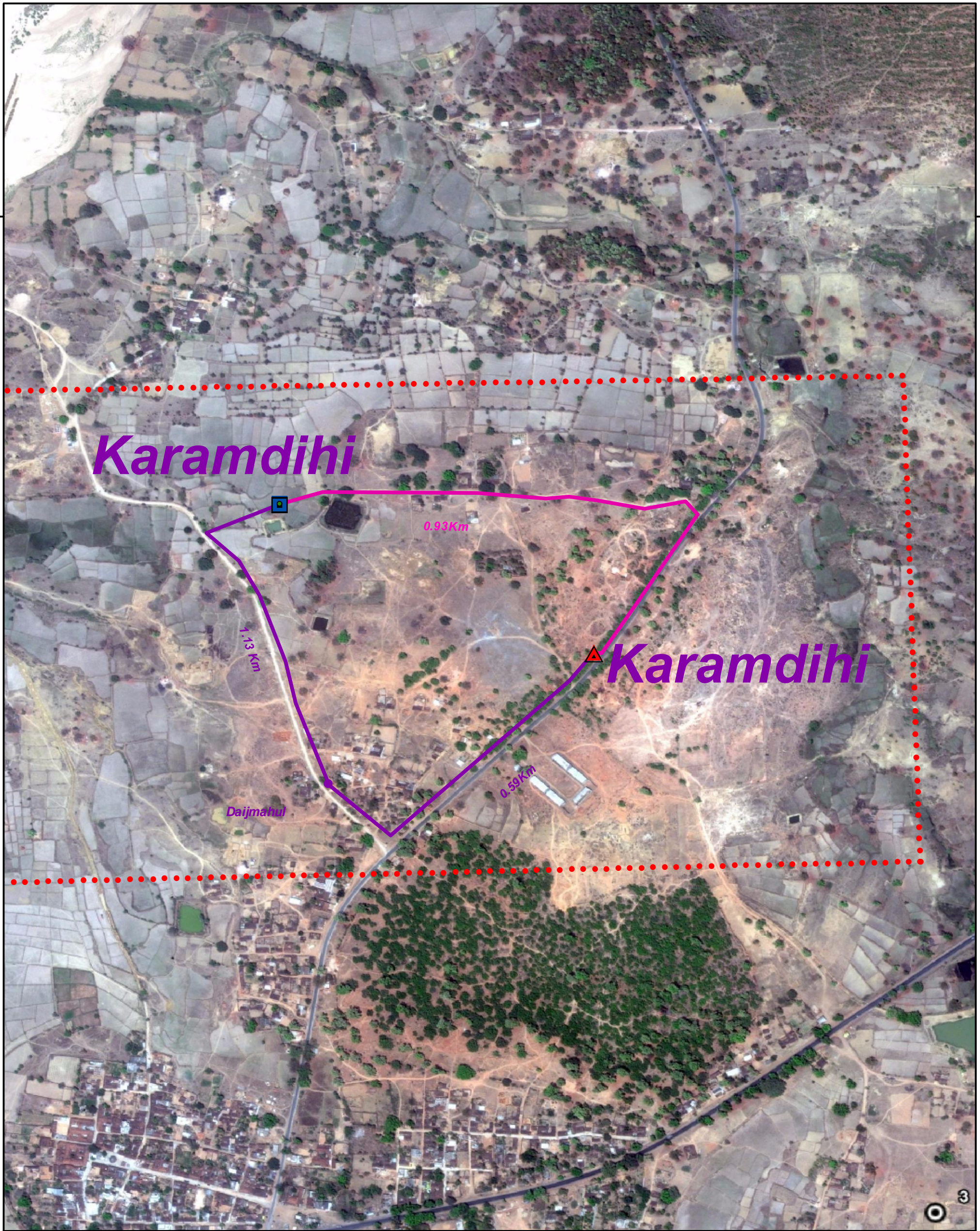


Plate : SUN 19a

WESCO

Proposed alignment of 33KV line under Infrastructure Development Plan

Karamdihi-Karamdihi



Existing location of 132/33 KV s/s or Tapping location on existing 33 KV line



Proposed location of 33/11 KV s/s



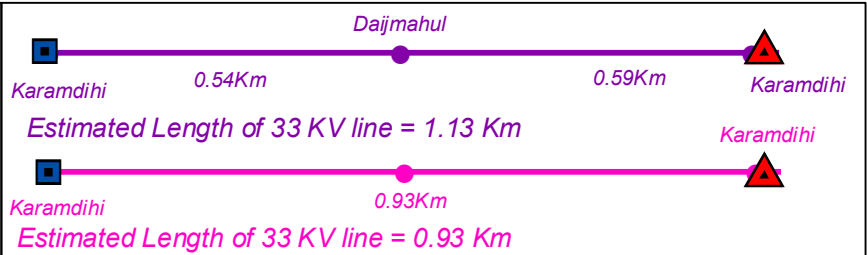
Buffer Line (3 Km from Point)



Proposed Power Line (Option 1)



Proposed Power Line (Option 2)



Prepared by:



Spatial Planning & Analysis Research Centre Pvt. Ltd.
E/11, Infocity, Patia, Bhubaneswar