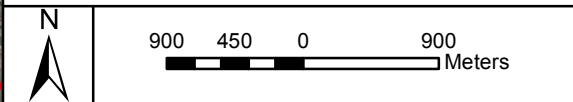


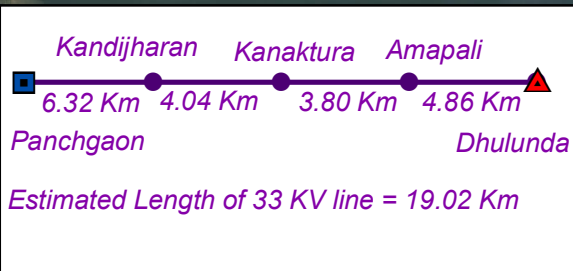
Plate : JHA 6a

**WESCO**

Proposed alignment of 33KV line under  
Infrastructure Development Plan  
**Panchagaon - Dhulunda**



- Existing location of 132/33 KV s/s or Tapping location on existing 33 KV line
- Proposed location of 33/11 KV s/s
- Buffer Line(3 Km from Point)
- Proposed Power Line



Prepared by:   
Spatial Planning & Analysis Research Centre Pvt. Ltd.  
E/11, Infocity, Patia, Bhubaneswar