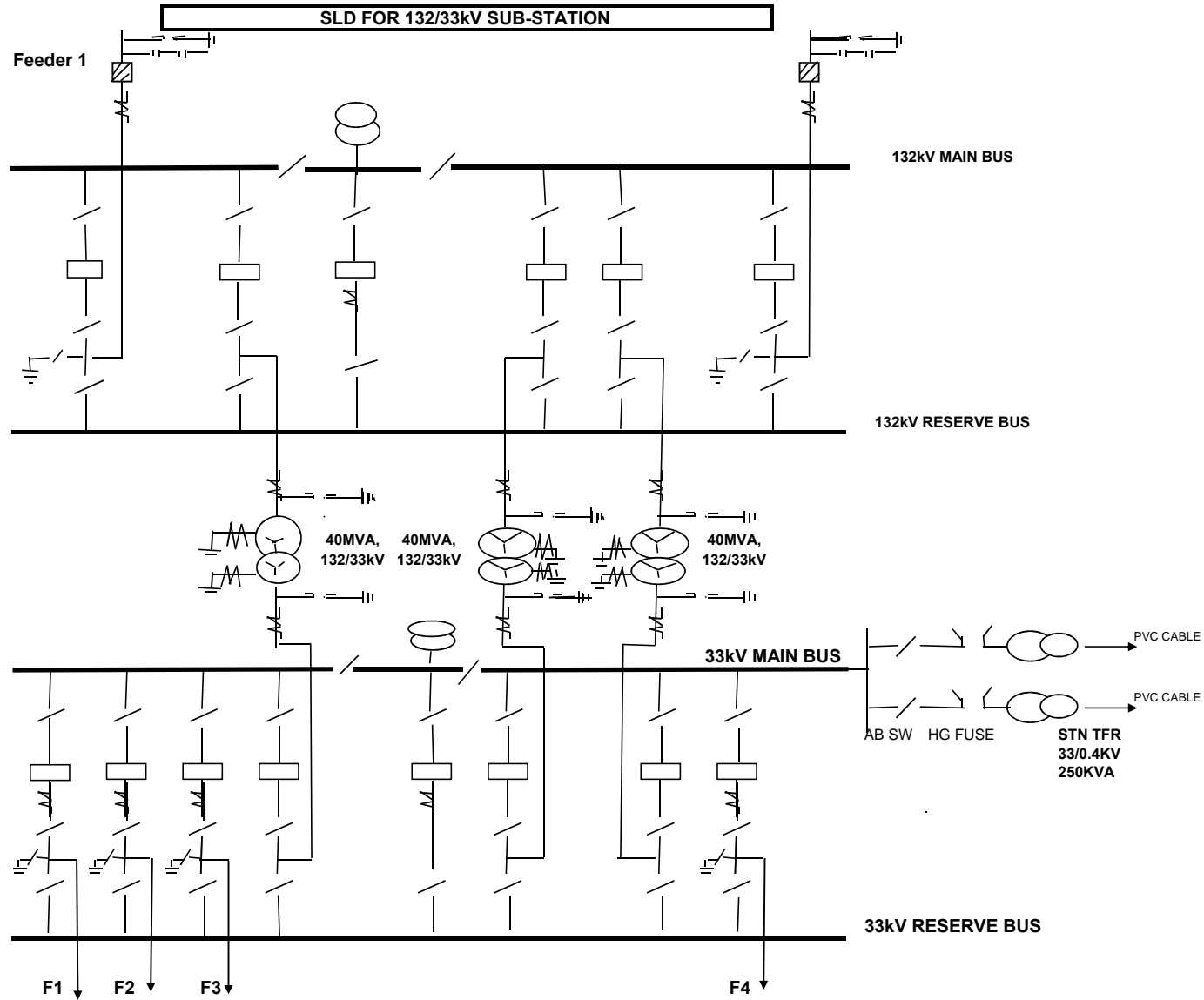




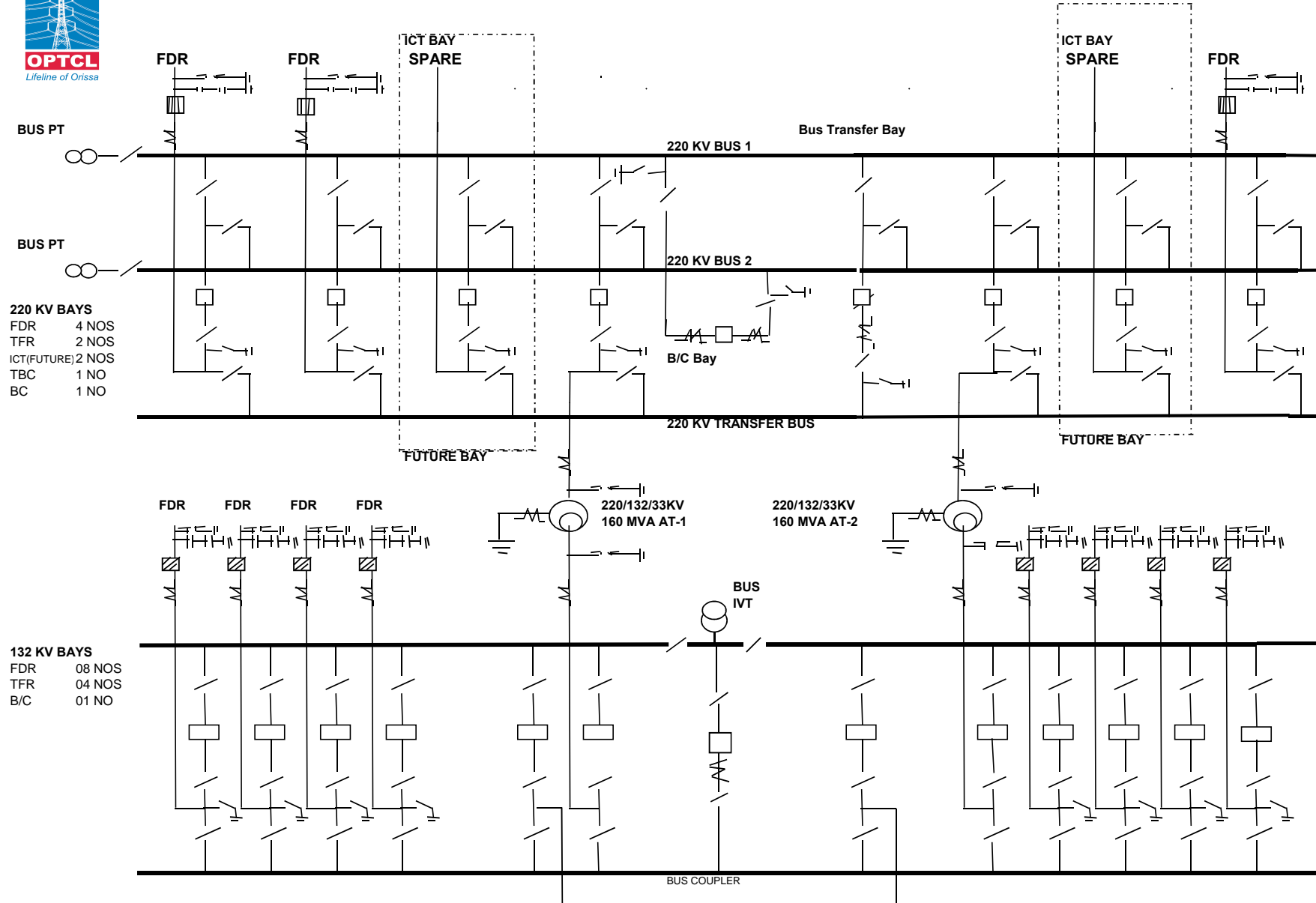
**132 KV BAYS**  
FEEDER 02 NOS.  
TRANSF 03 NOS.  
BUS COU 01 NO.

**33KV BAY**  
FEEDER 04 NOS.  
TRANSF 03 NOS.  
BUS COU 01 NO.

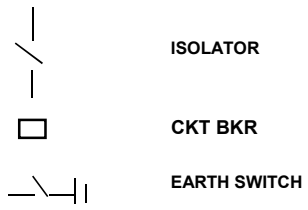




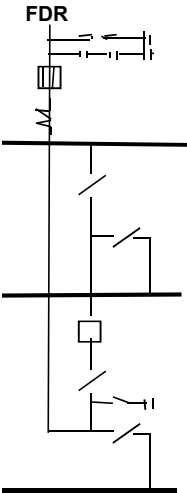
# SLD FOR 220/132/33kV SUB-STATION -3BUS ARRANGEMENT-in 220 KV







SIDE



132 KV MAIN BUS

132 KV RESERVE BUS

▶ PVC CABLE

▶ PVC CABLE

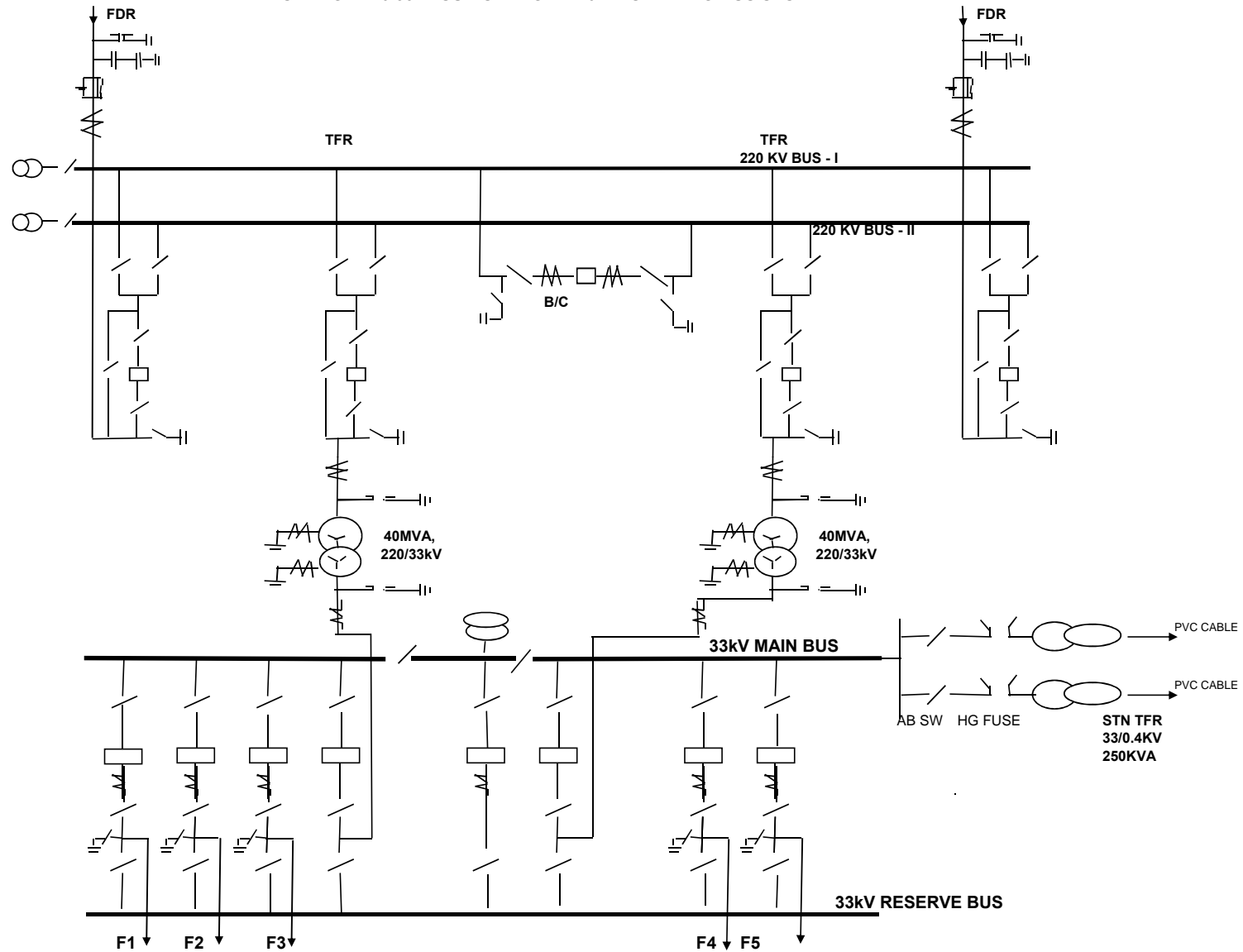




**220 KV BAYS**  
 FDR 02 NOS  
 TFR 2 NOS  
 BC 1 NO

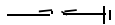
**33 KV BAYS**  
 FDR 05 NOS  
 TFR 02 NOS  
 B/C 01 NO

# SLD FOR 220/33kV SUB-STATION -220 KV SIDE TWO BUS SYSTEM





**SYMBOLS USED**



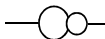
**SURGE ARRESTOR**



**WAVE TRAP**



**CURRENT TRANSFORMER**



**IND VOLTAGE TRANSFORMER**



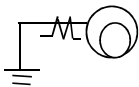
**CAP VOLTAGE TRANSFORMER**



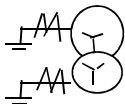
**ISOLATOR**

**EARTH SWITCH**

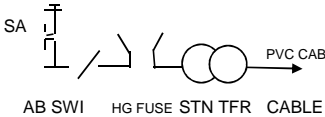
**CKT BKR**



**AUTO TRANSFORMER**



**POWER TRANSFORMER**



**STATION AUXILIARY SYSTEM**