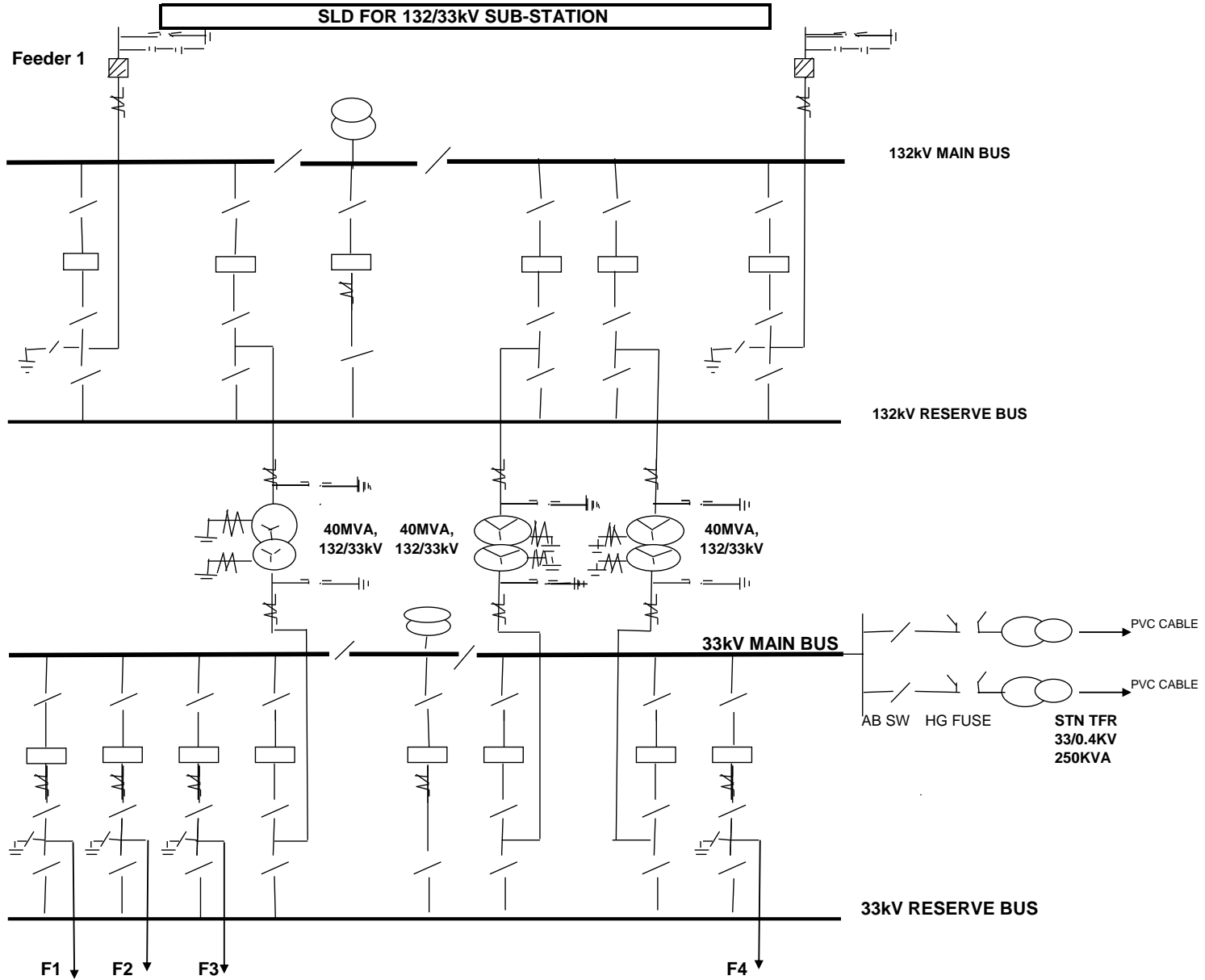




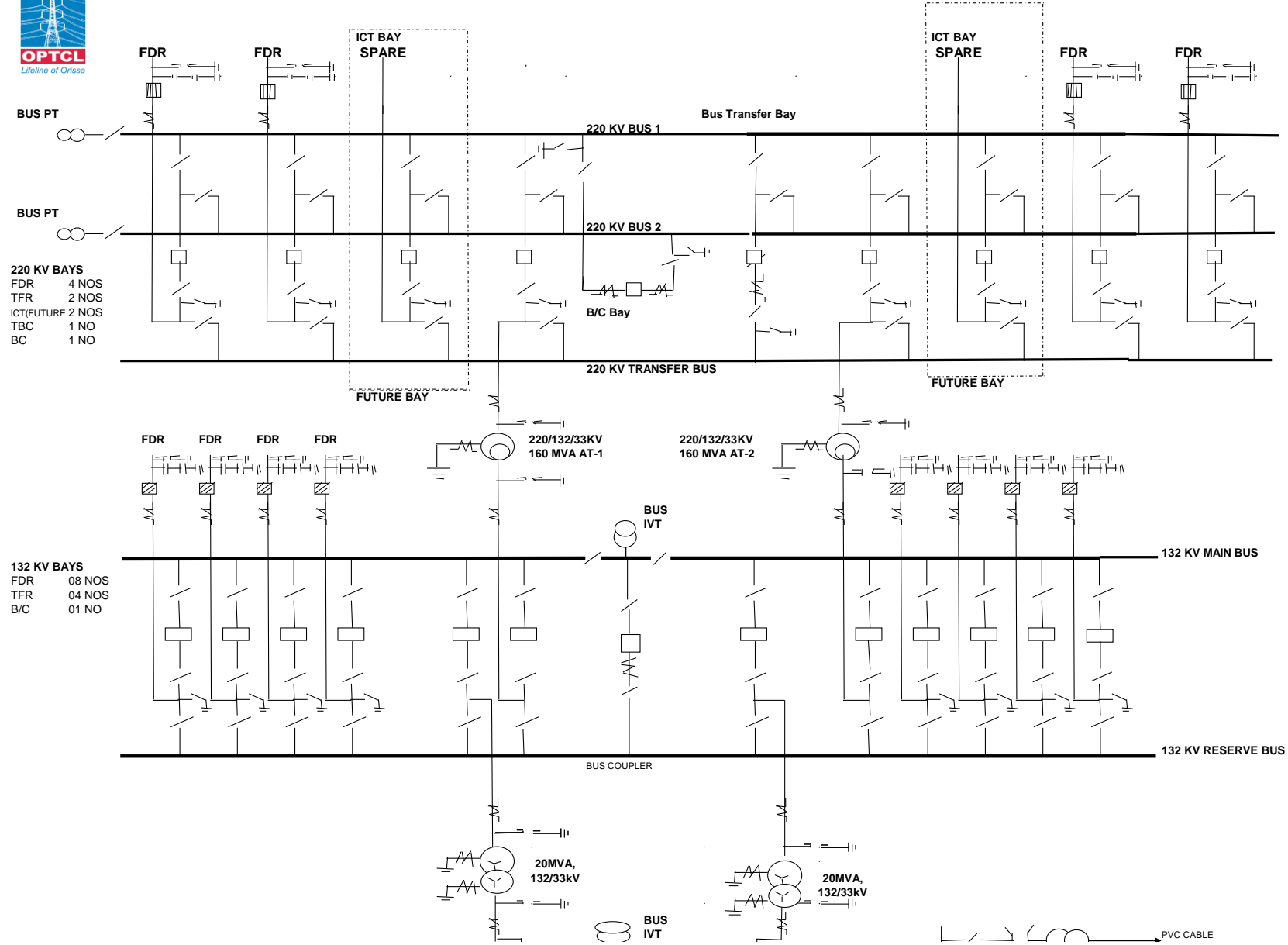
132 KV BAYS
FEEDER 02 NOS.
TRANSF 03 NOS.
BUS COU 01 NO.

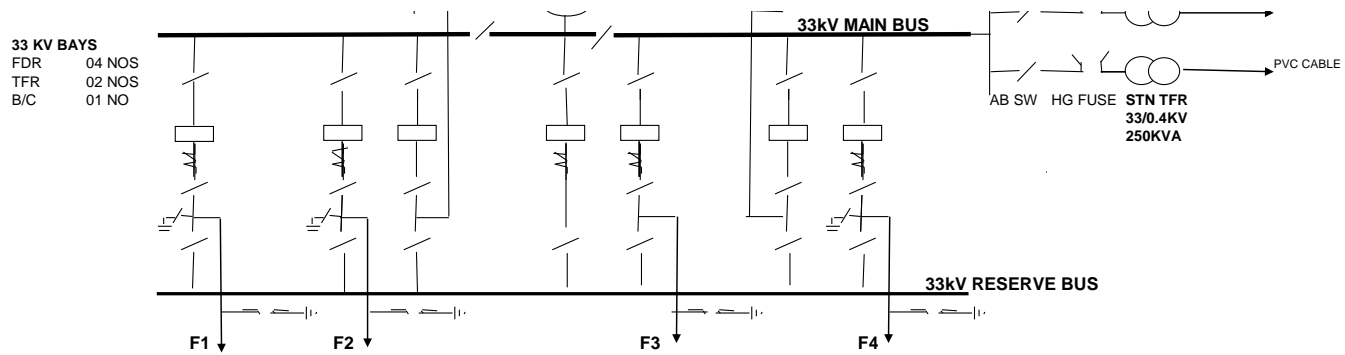


33KV BAY
FEEDER 04 NOS.
TRANSF 03 NOS.
BUS COU 01 NO.

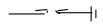


SLD FOR 220/132/33kV SUB-STATION -3BUS ARRANGEMENT-in 220 KV SIDE





SYMBOLS USED



SURGE ARRESTOR



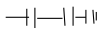
WAVE TRAP



CURRENT TRANSFORMER



IND VOLTAGE TRANSFORMER



CAP VOLTAGE TRANSFORMER



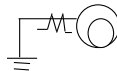
ISOLATOR



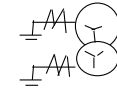
CKT BKR



EARTH SWITCH



AUTO TRANSFORMER



POWER TRANSFORMER



SA AB SWI HG FUSE STN TFR CABLE STATION AUXILIARY SYSTEM



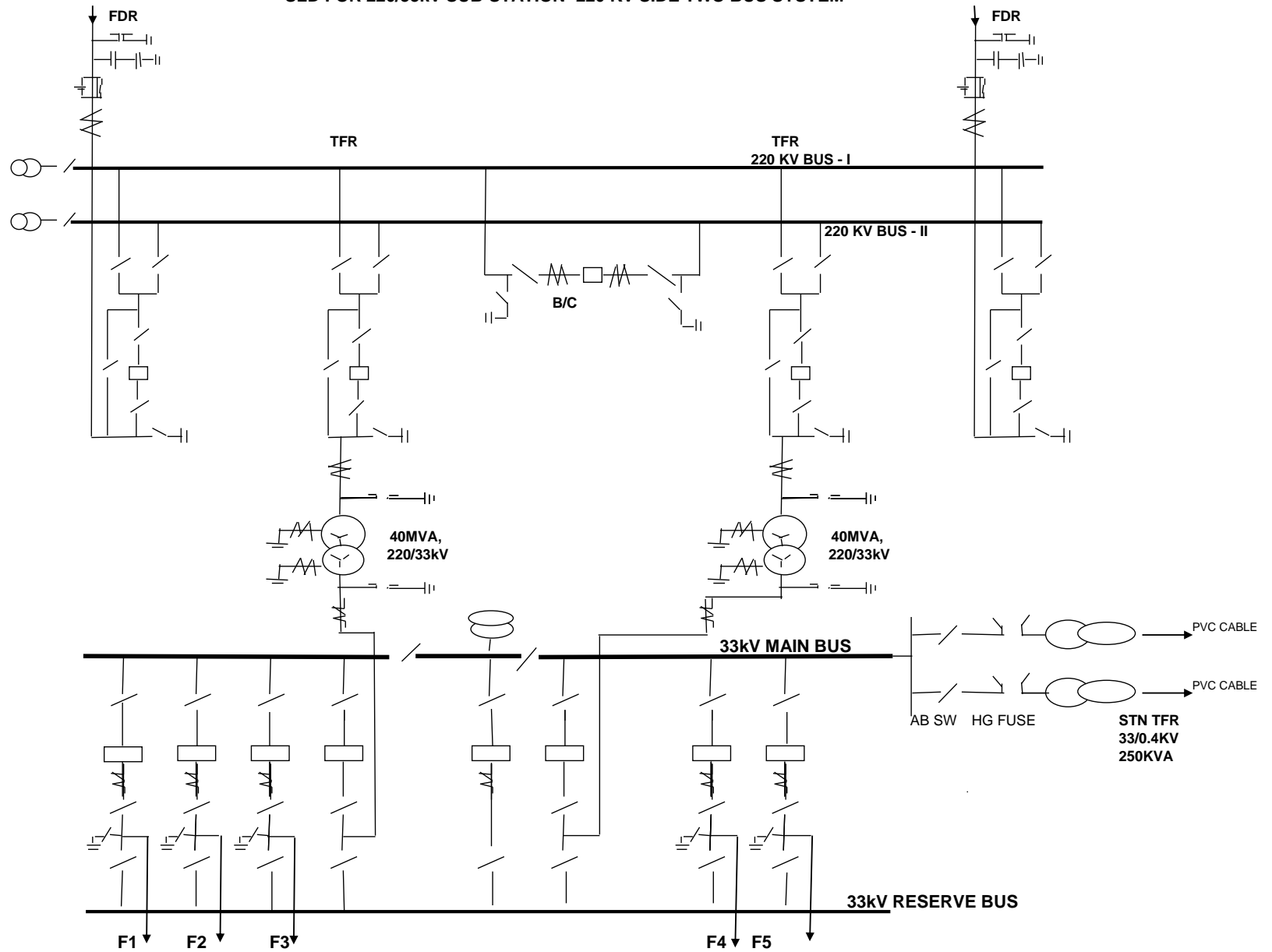
220 KV BAYS

FDR 02 NOS
TFR 2 NOS
BC 1 NO

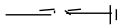
SLD FOR 220/33kV SUB-STATION -220 KV SIDE TWO BUS SYSTEM

33 KV BAYS

FDR 05 NOS
TFR 02 NOS
B/C 01 NO



SYMBOLS USED



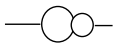
SURGE ARRESTOR



WAVE TRAP



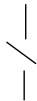
CURRENT TRANSFORMER



IND VOLTAGE TRANSFORMER



CAP VOLTAGE TRANSFORMER



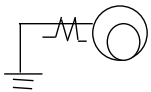
ISOLATOR



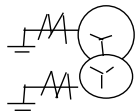
EARTH SWITCH



CKT BKR



AUTO TRANSFORMER



POWER TRANSFORMER

