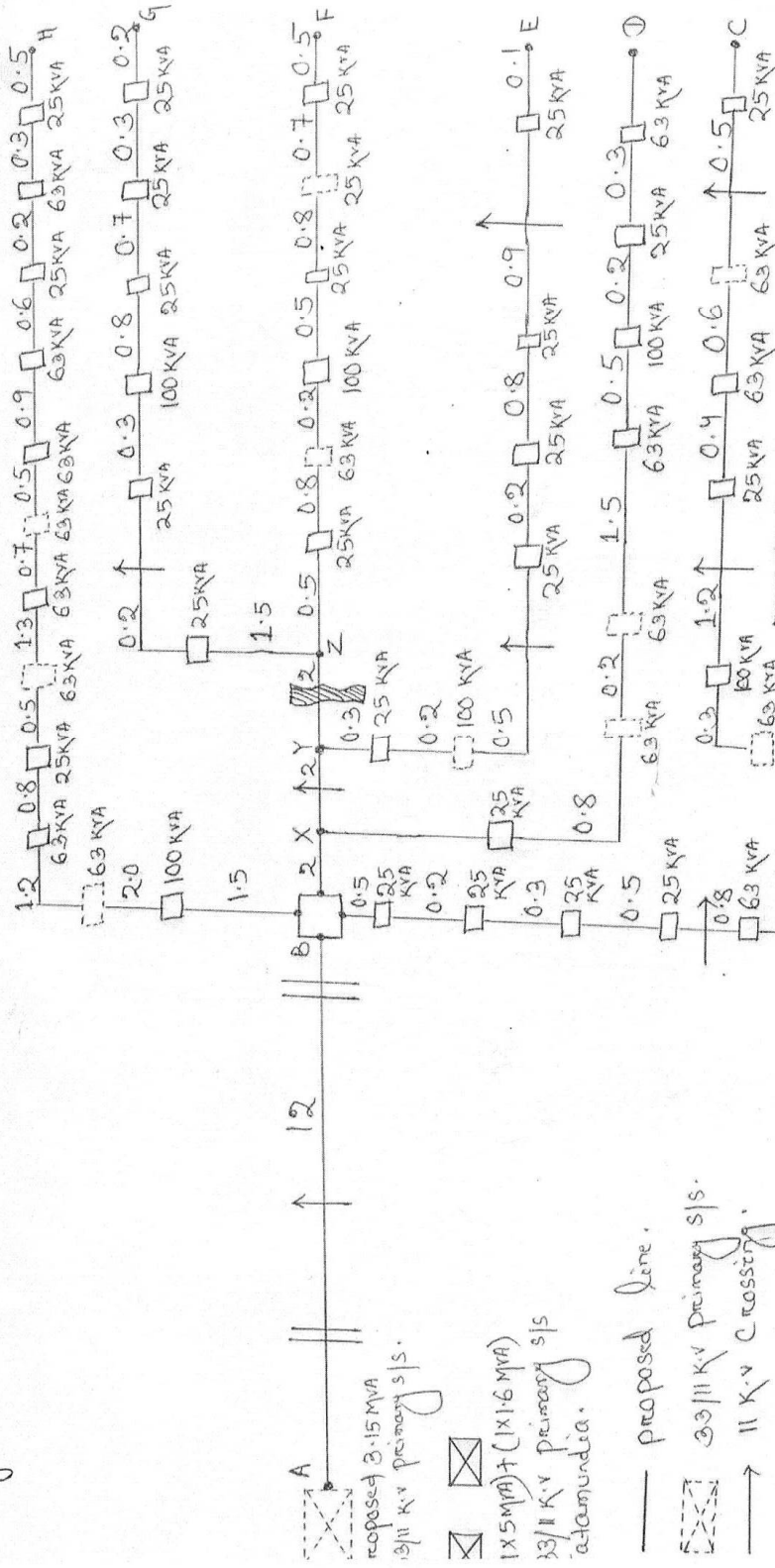


Proposed Jatamundia to Talabasta dedicated agriculture Feeder

Drug No - ODAFFP/CESU/SLO/1

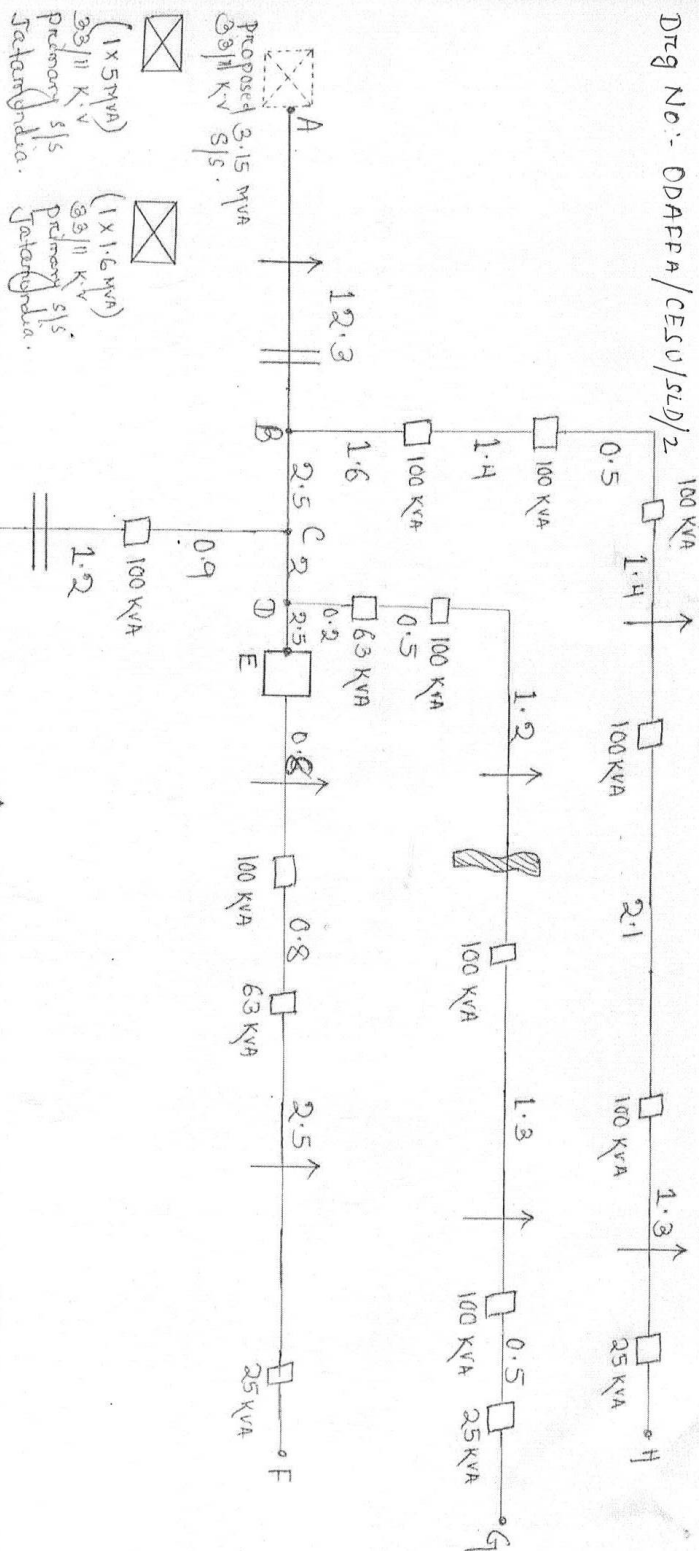


Total trunk line = 18 k.m		spur line = 30 k.m	
Spurline	Trunk line	spur line	Trunk line
km	km	km	km
ABH	12	11.0	Total 23
ABC	12	6.5	18.5
AXD	14	3.5	17.5
AYE	16	3.0	19.0
AZG	18	4.0	22 km
AZF	18	4.0	22 km

Sub-Divisional Officer (Elect.) ~~Bank Manager~~ (Bank)
Bank, CESU, ~~Bank, Sector, Bank~~

Proposed Jatamunda to Barara Special Dedicated Agriculture Feeder.

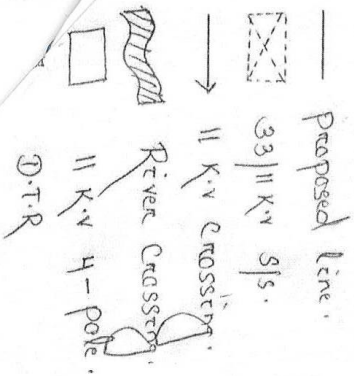
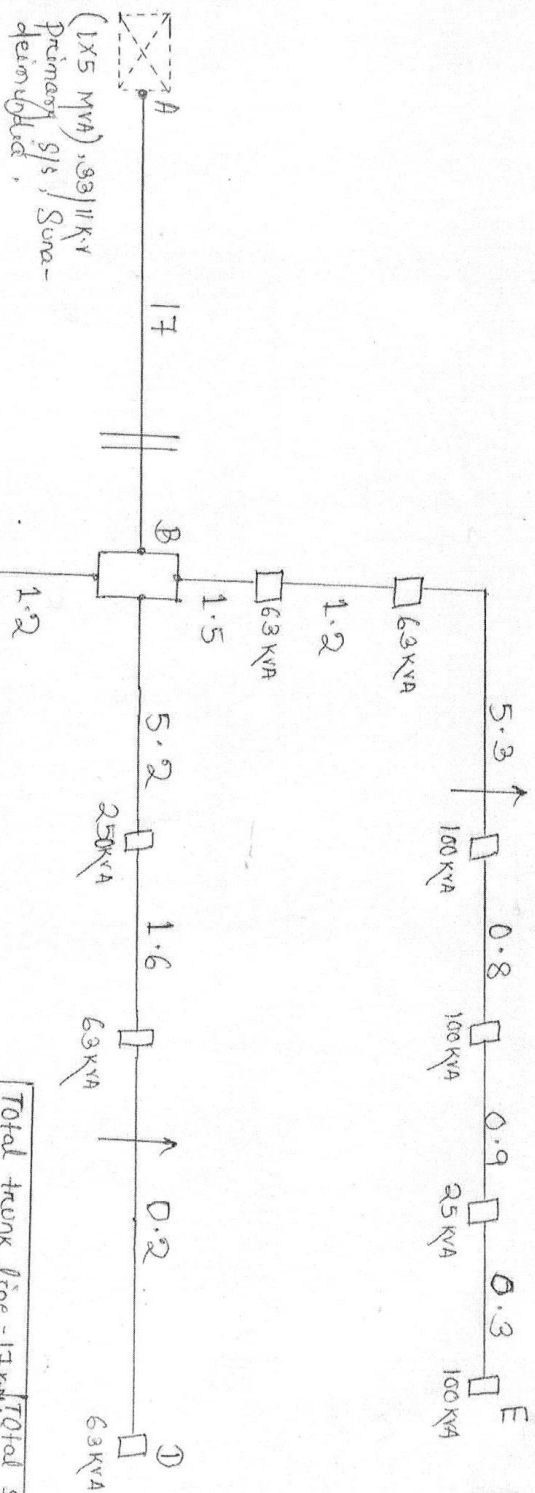
Dirg No:- ODAPFA/CESU/SLD/2



Suo-Divisional Officer (Electy) in Section
Barak, CESU

Total		trunk len = 19.3 Km		Total spur line = 23.4	
SPUR	Line	Trunk Len	SPUR Len	Total	Spur line
Line	km	km	km	km	km
ABH	12.3	8.3	20.6	525	-
ADG	16.8	3.7	20.5	388	-
ACI	14.8	6.1	20.9	351	-
AEF	19.3	4.1	23.4	188	-

Proposed Suradeimunda to Anvany dedicated agriculture Feeder

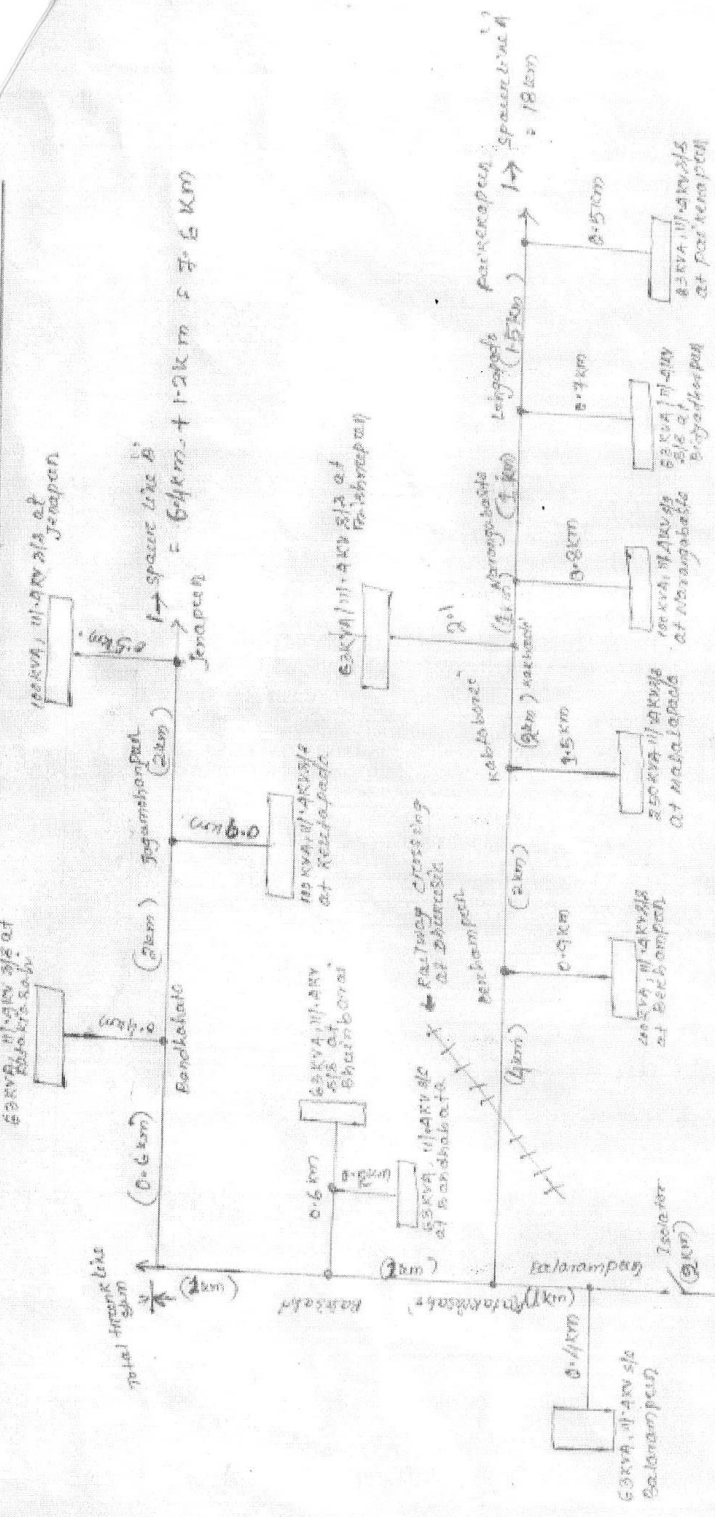


Dr. No - ODAFP/CSU/SLD/3

Sub-Division Officer (Electrical),
Banks, Odisha

Total trunk line = 17 km			
SPUR Line	Trunk Line to K.M	SPUR Line to K.M	Total
ABE	17	10	27
ABD	17	7	24
ABC	17	3.6	20.6
Total trunk line			
ABE	45.1	-	45.1
ABD	37.6	-	37.6
ABC	12.6	15.0	27.6

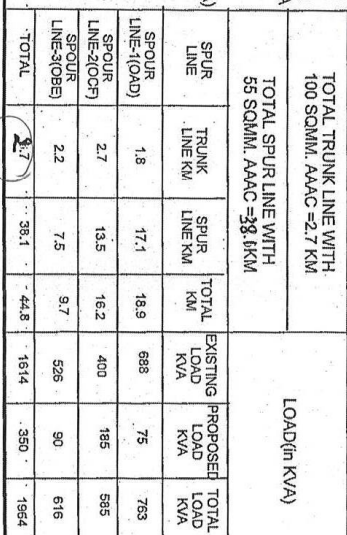
NAME OF THE PROJECT: DESIGN OF A 11KV FEEDER UNDER A.E.D, ATHAGARRA

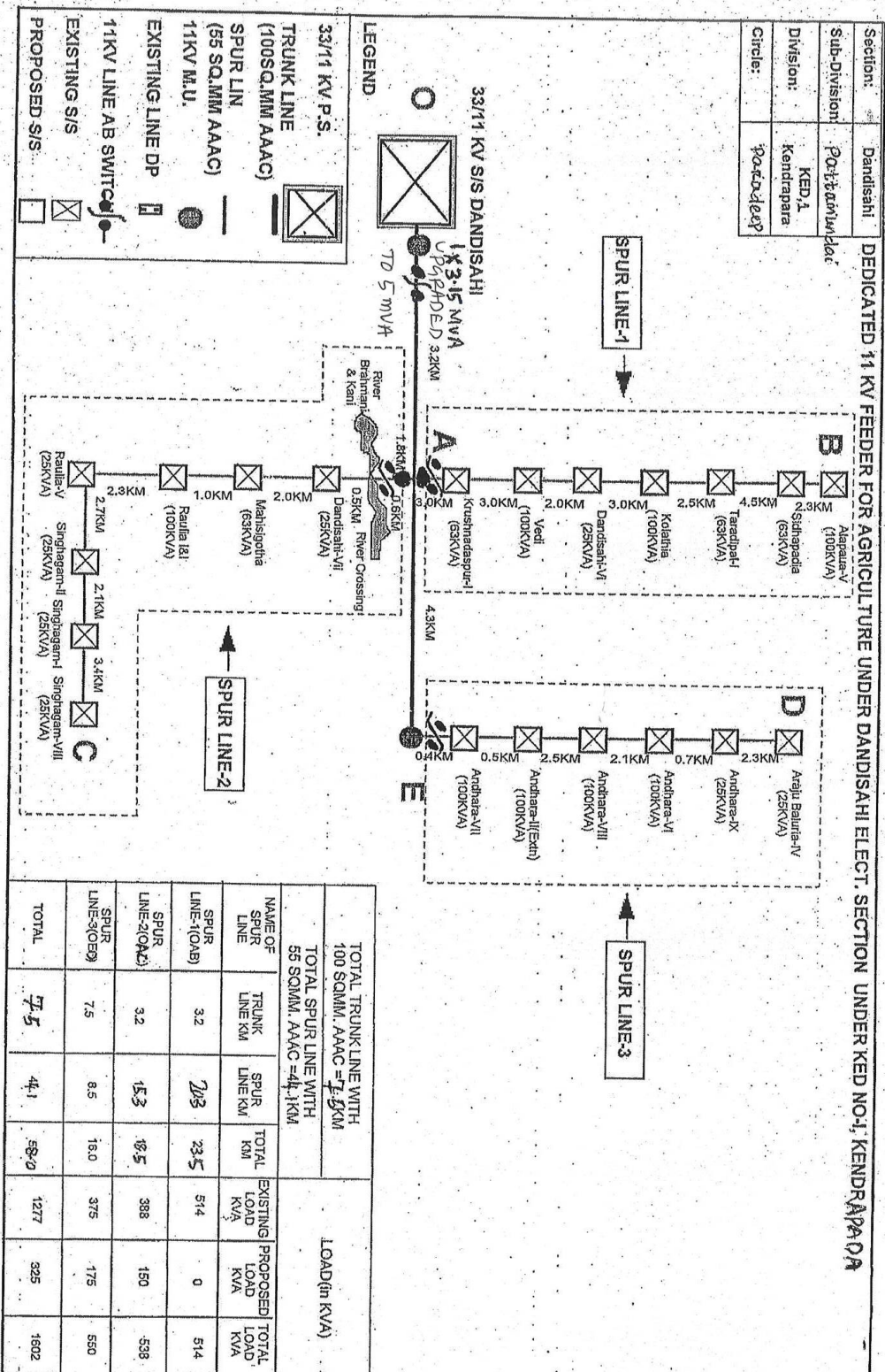


Total Feeder Line = 5 km
 SPUR LINE A-E = 18 km
 SPUR LINE B = 7.6 km

ACU

PROPOSED DEDICATED AGRICULTURE 11 KV FEEDER OF
RAJKANIKIA SECTION OF KED NO I UNDER KENDRAPARA DISTRICT

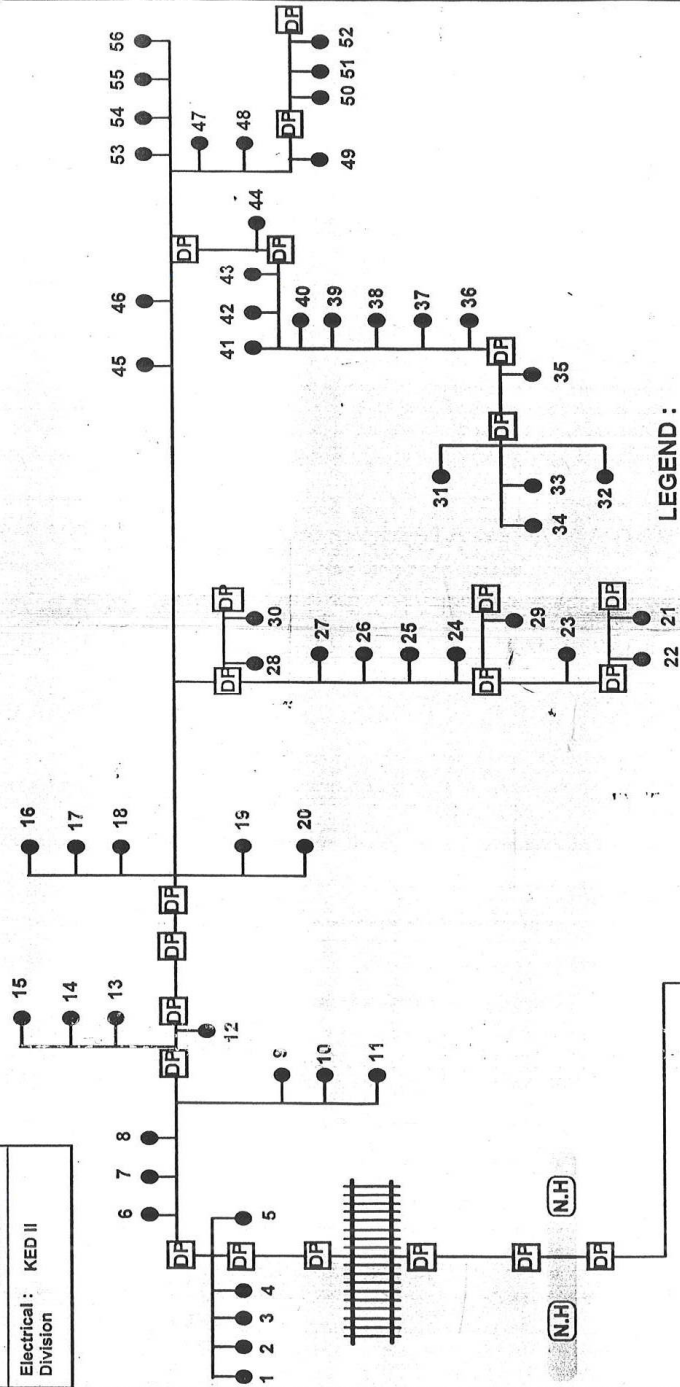




Drng No. ODAFP/CSU/SLD/6

PROPOSED NABARKAN DEDICATED 11KV AGRICULTURAL FEEDER UNDER KENDRAPARA DISTRICT

Location :	NABARKAN
District :	Kendrapara
Electrical Division :	KED II



LEGEND :

Proposed 11 kV Agricultural Feeder
LI Point
Railway Track
National Highway

SCOPE :

11KV Feeder Length : 32 km
No of Existing LJ point: 56

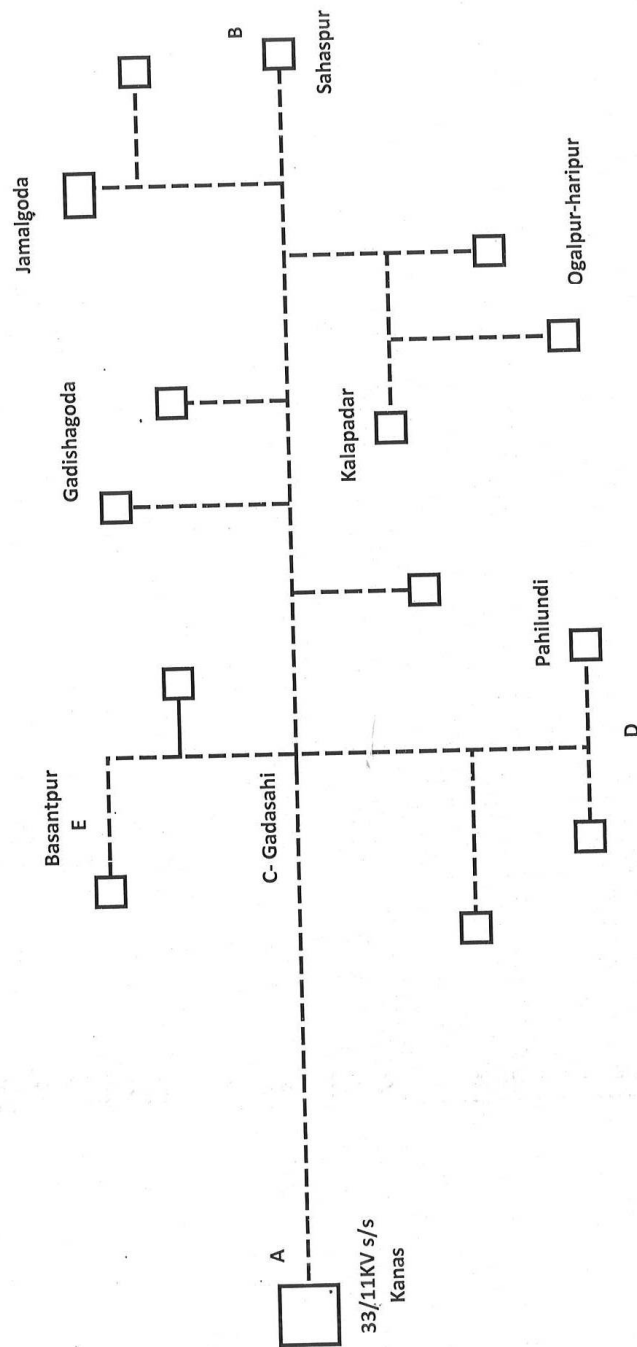
CESU
Prepared by PRDC

Drig No:- ODAPP/CEV/SLD/7

SINGLE LINE DIAGRAM OF SPECIAL AGRICULTURE FEEDER UNDER KANAS ELECTRICAL SECTION IN PED PURI

Division	PED, Puri
District	Puri
Block	Kanas

Scope of work	
Length of the feeder	30 KM
Kanas to sahaspur	20 KM
Gadasahi to all points	10KM

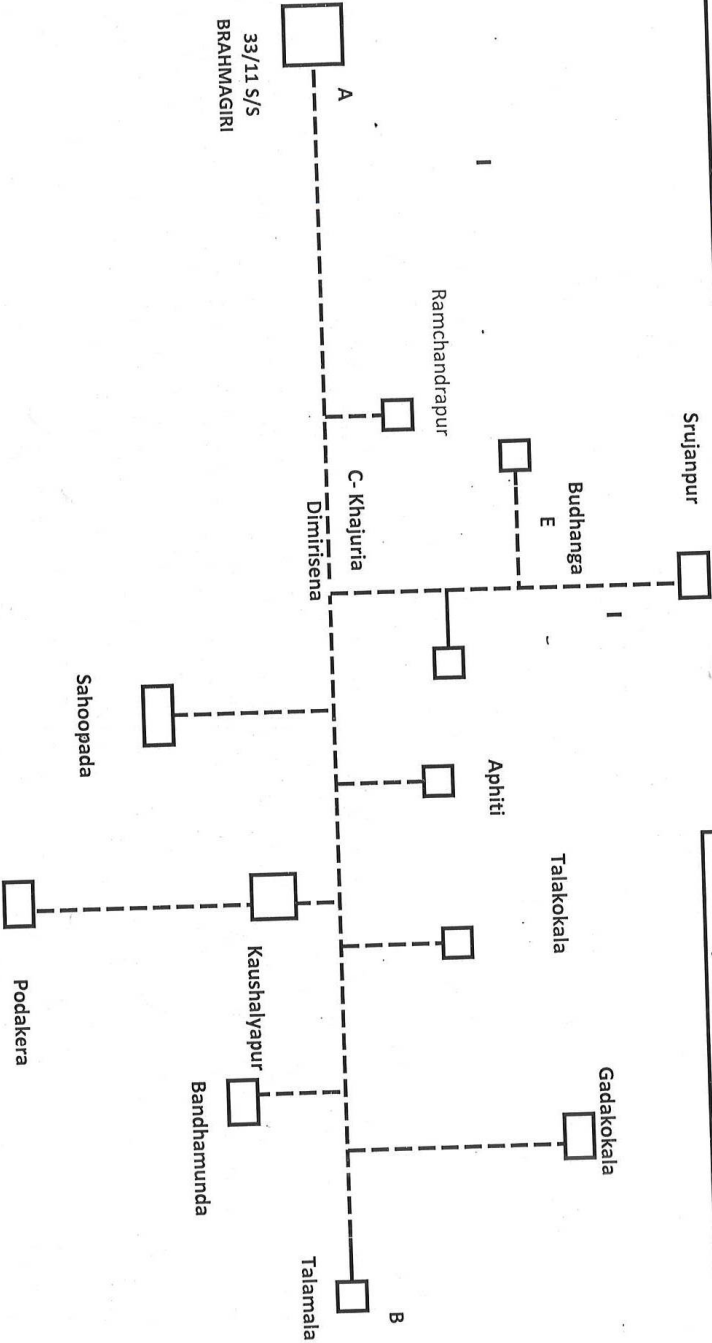


Dr. No: ODAFFP/CESU/SLD/8

SINGLE LINE DIAGRAM OF SPECIAL AGRICULTURE FEEDER UNDER BRAHMAGIRI ELECTRICAL SECTION IN PED PURI

Division	PED, Puri
District	Puri
Block	Brahmagiri

Scope of work		
Length of the feeder	30 KM	
Brahmagiri to Talamala	22 KM	
Khajuria to all points	8KM	

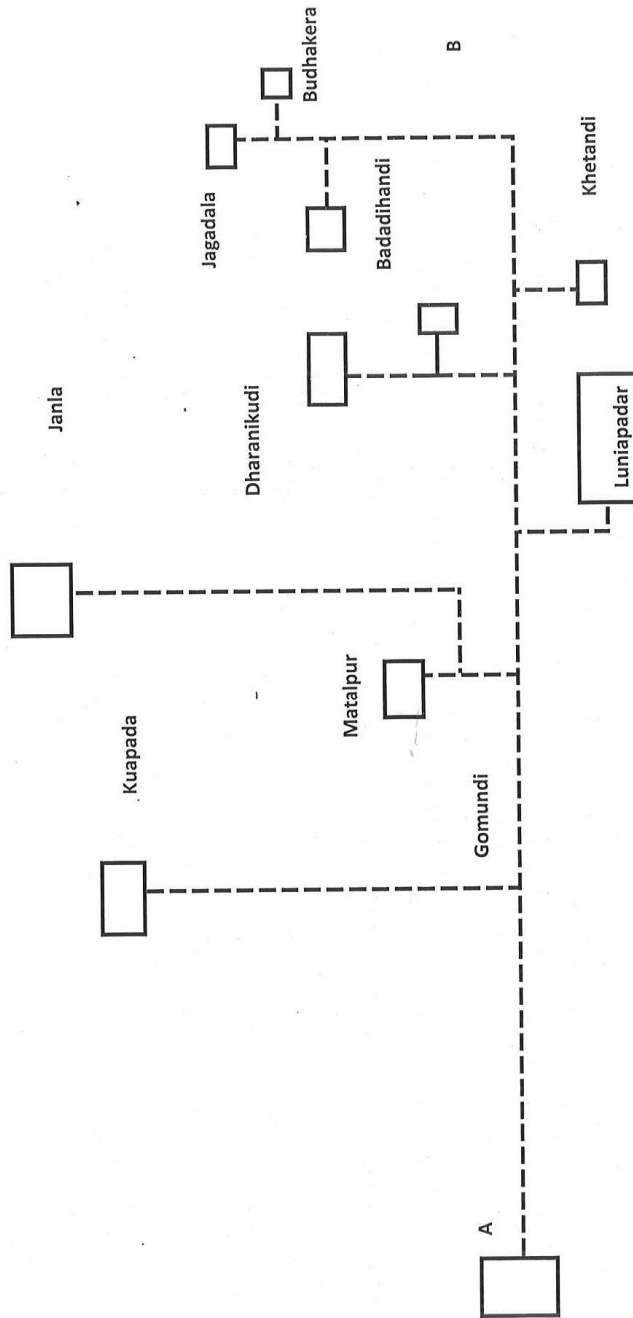


DRG No:- 0DAFP/CESV/SLD/9

SINGLE LINE DIAGRAM OF SPECIAL AGRICULTURE FEEDER UNDER SUNAMUHN ELECTRICAL SECTION IN PED PURI

Division	PED, Puri
District	Puri
Block	Brahmagiri

Scope of work	
Length of the feeder	29 KM
Sunamuhin to Jagadala	16 KM
Gomundi to all lift points	13 KM

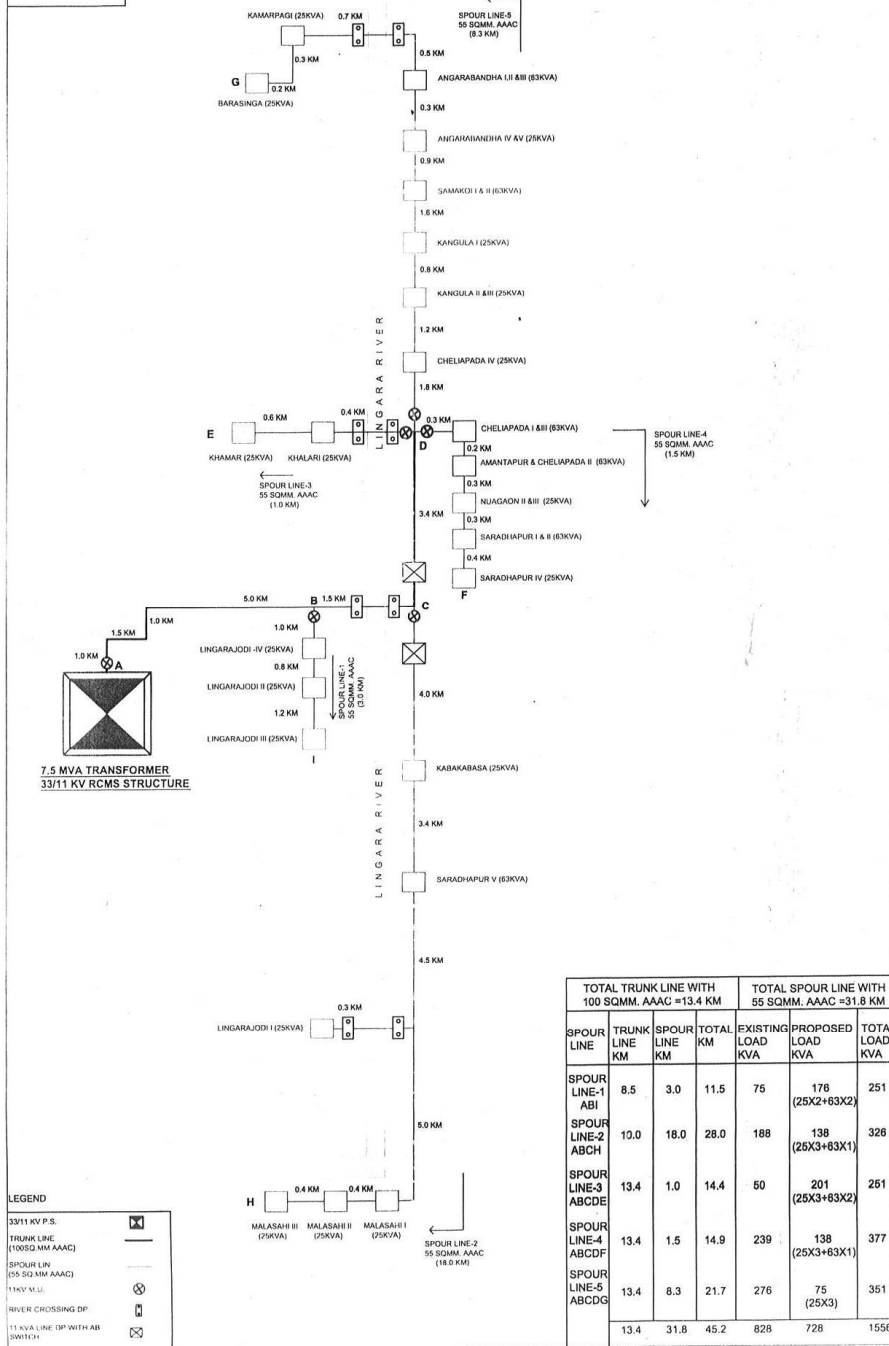


33/11KV s/s
Sunamuhin

DTG NO:- ODAFFP/CESU/SLD/10

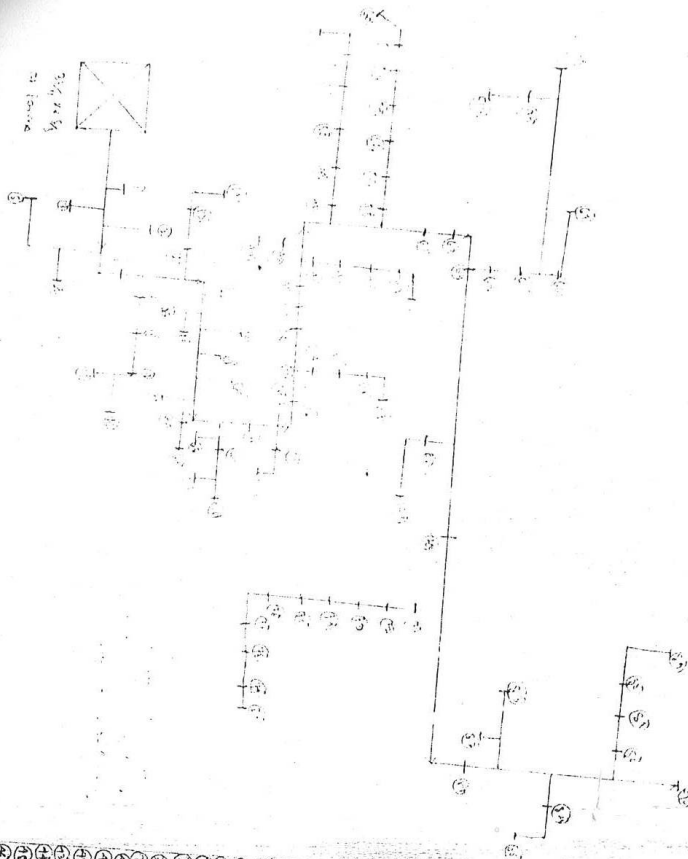
PROPOSED 11 KV DEDICATED AGRICULTURE FEEDER FROM 33/11 KV S/S TO SAMKOI, ANGUL

SUBDIVISION-ANGUL
DIVISION-A&D, ANGUL
CIRCLE-DHENKANAL



Draw No :- ODAFP/CES/SLD/11

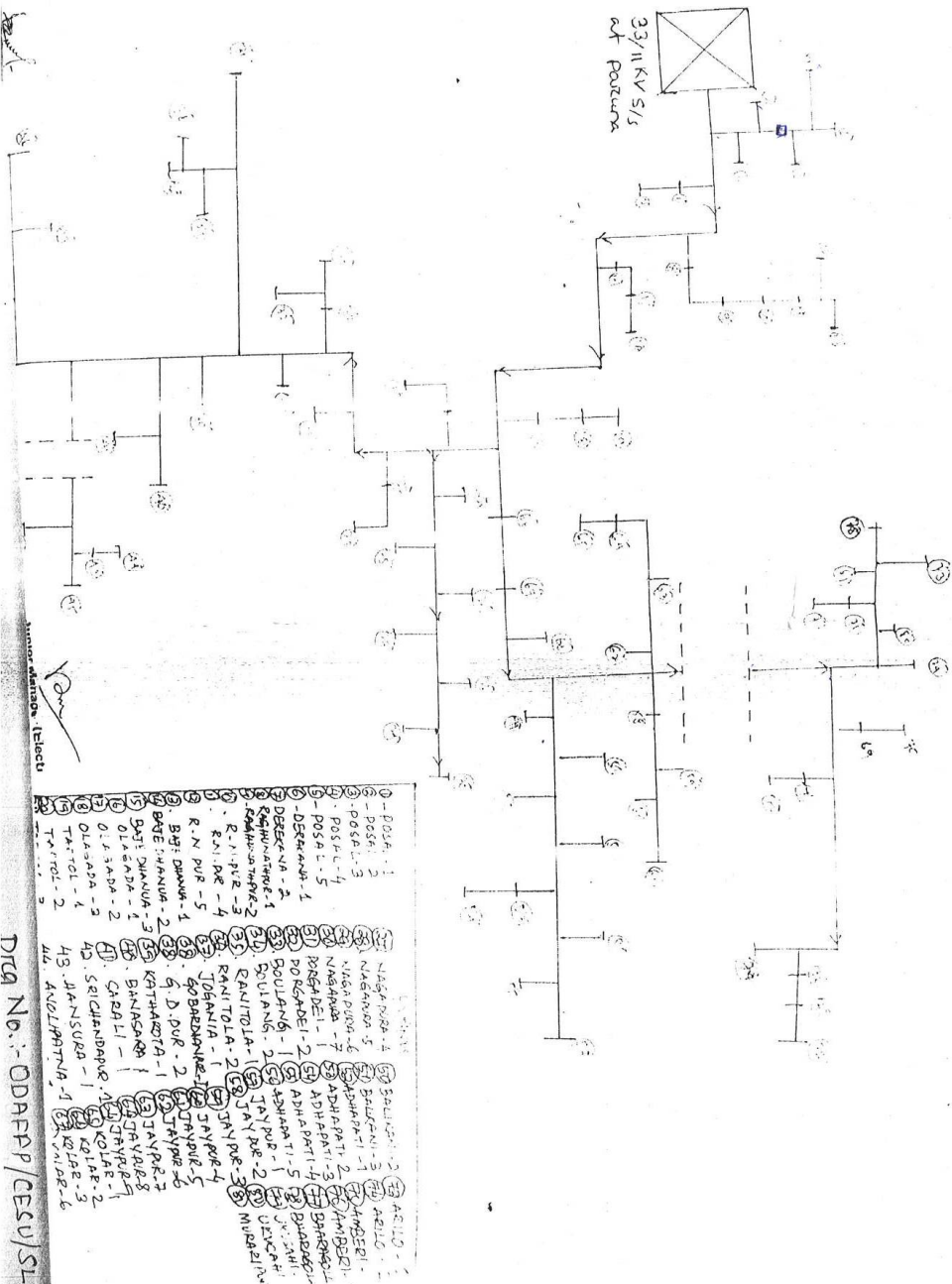
different L1 Projects.



- [illegible]

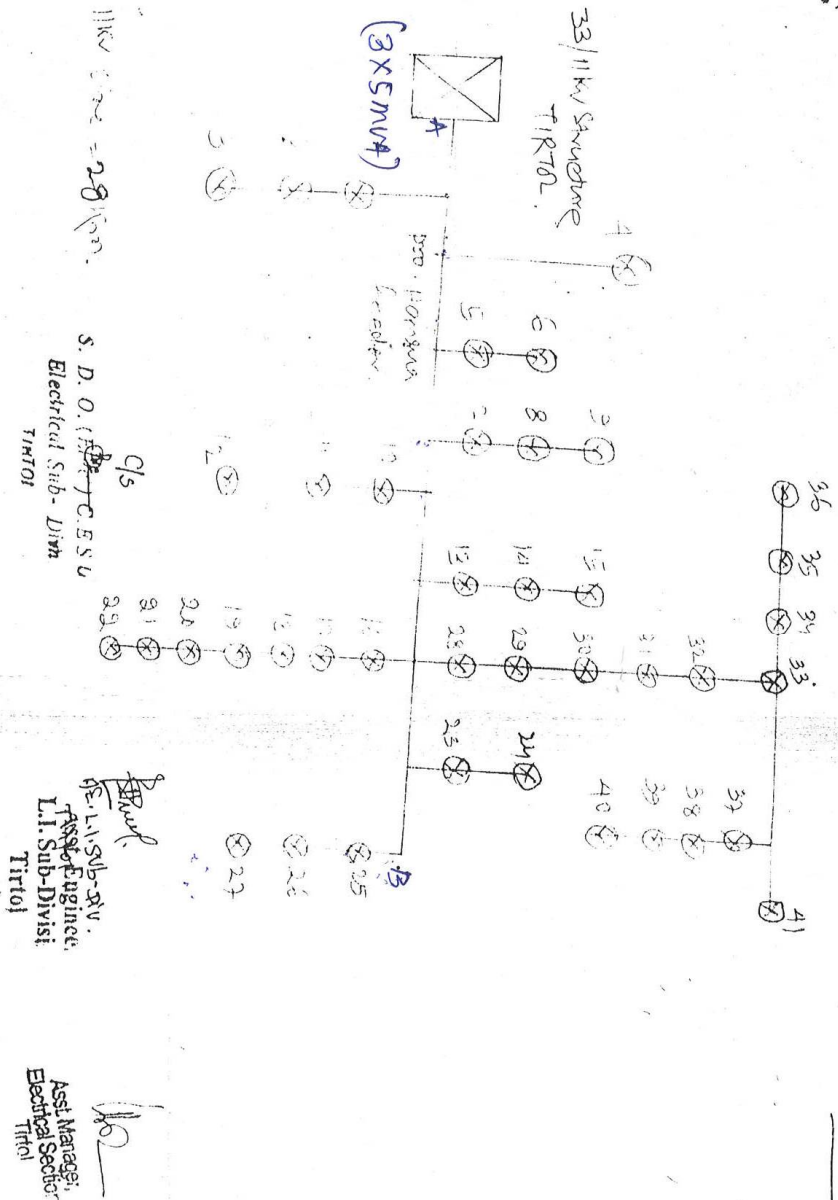
Drug No:- ODAPP/CE50/SLD/12

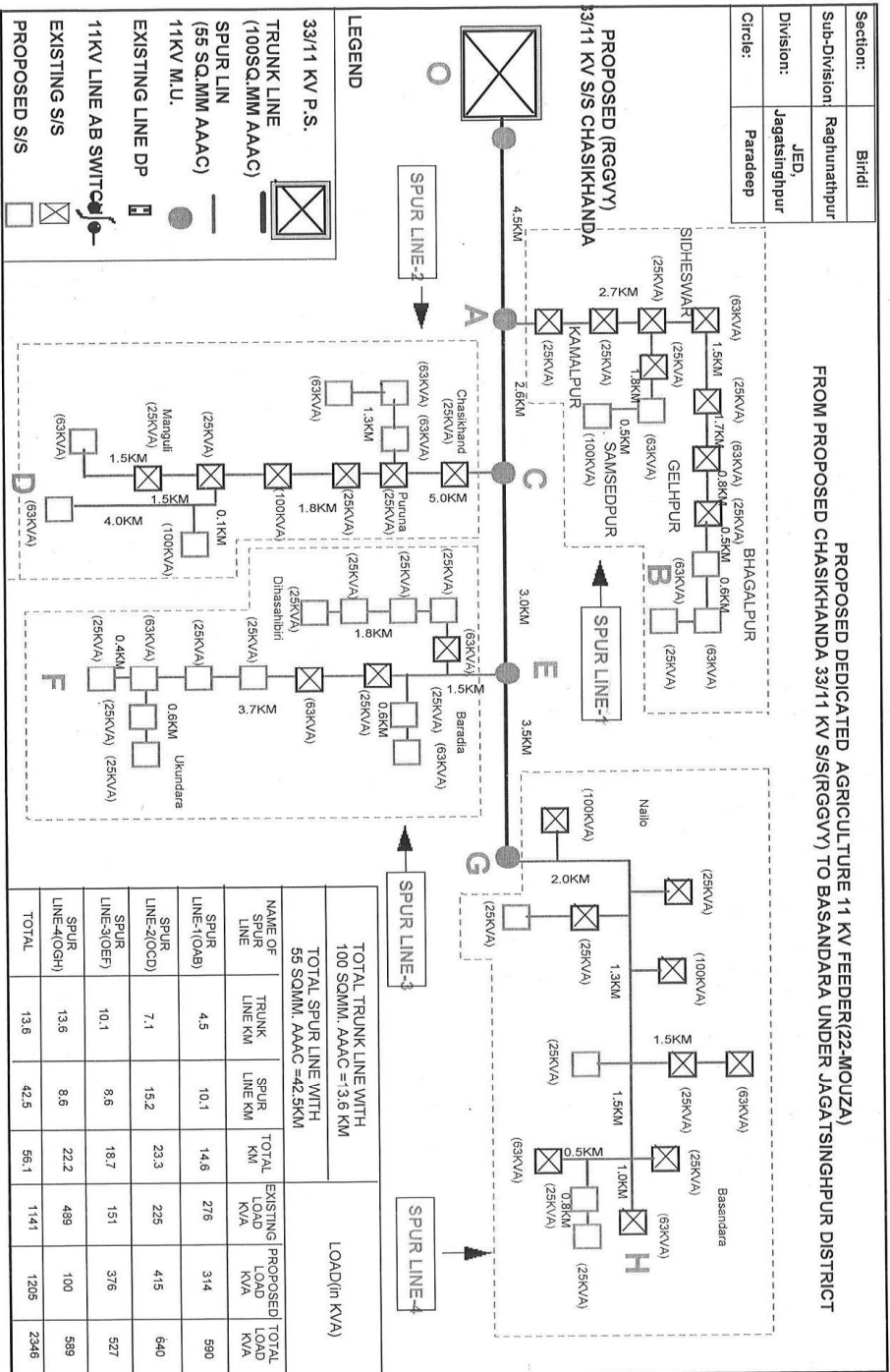
Single Line diagram of dedicated 11KV feeder P.O. No. II for 1/6 to adjacent LN pole in the Kurla
 No. 1/6



DTG No.:- ODAFP/CSU/SLD/13

Single Line diagram for Proposed 11KV Handwastepole for dedicated P/s to different L.P. Projects.

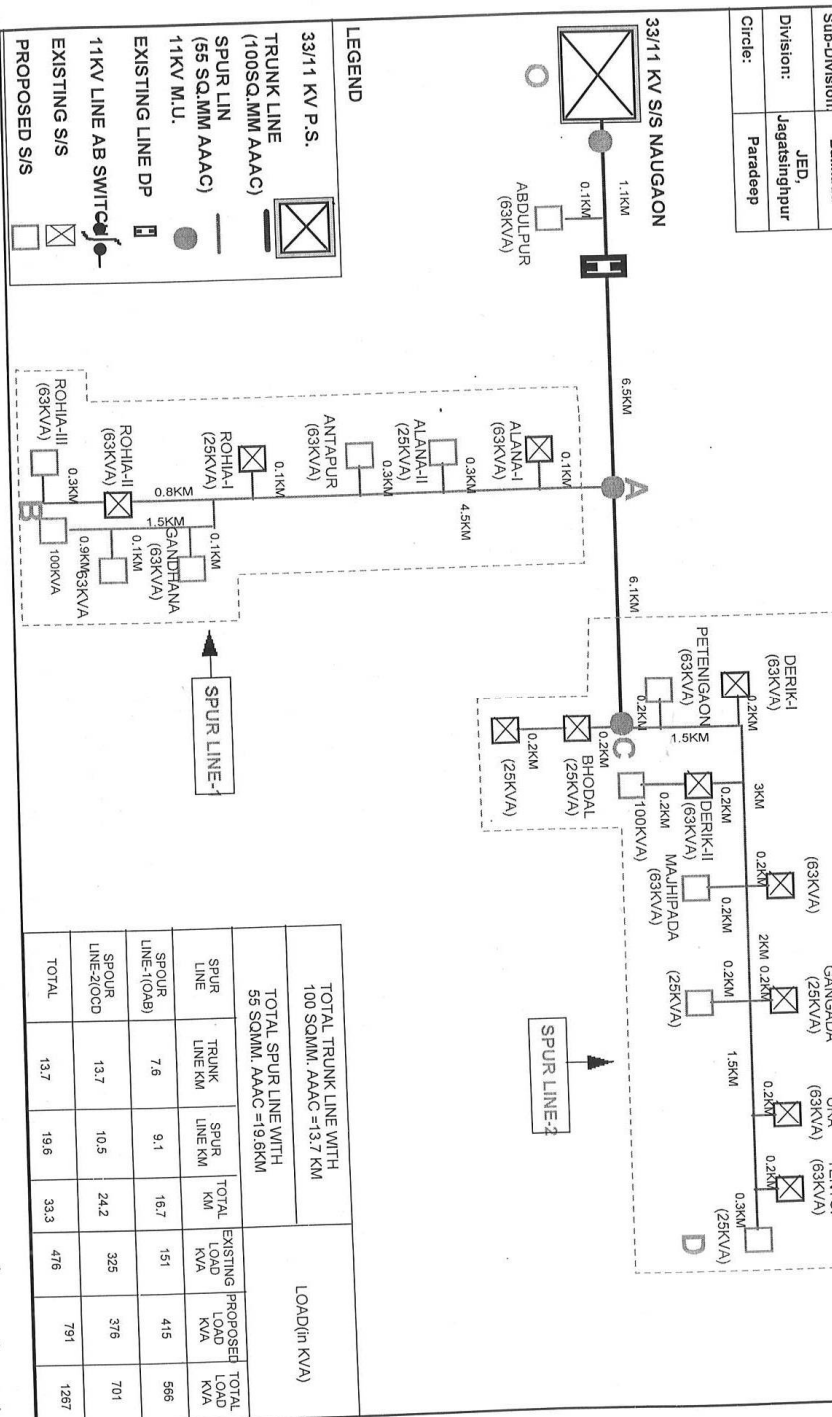




Dwg No.: ODRAFFP/CESU/SLD/15

Section:	Naugaon
Sub-Division:	Balkuda
Division:	JED, Jagatsinghpur
Circle:	Paradeep

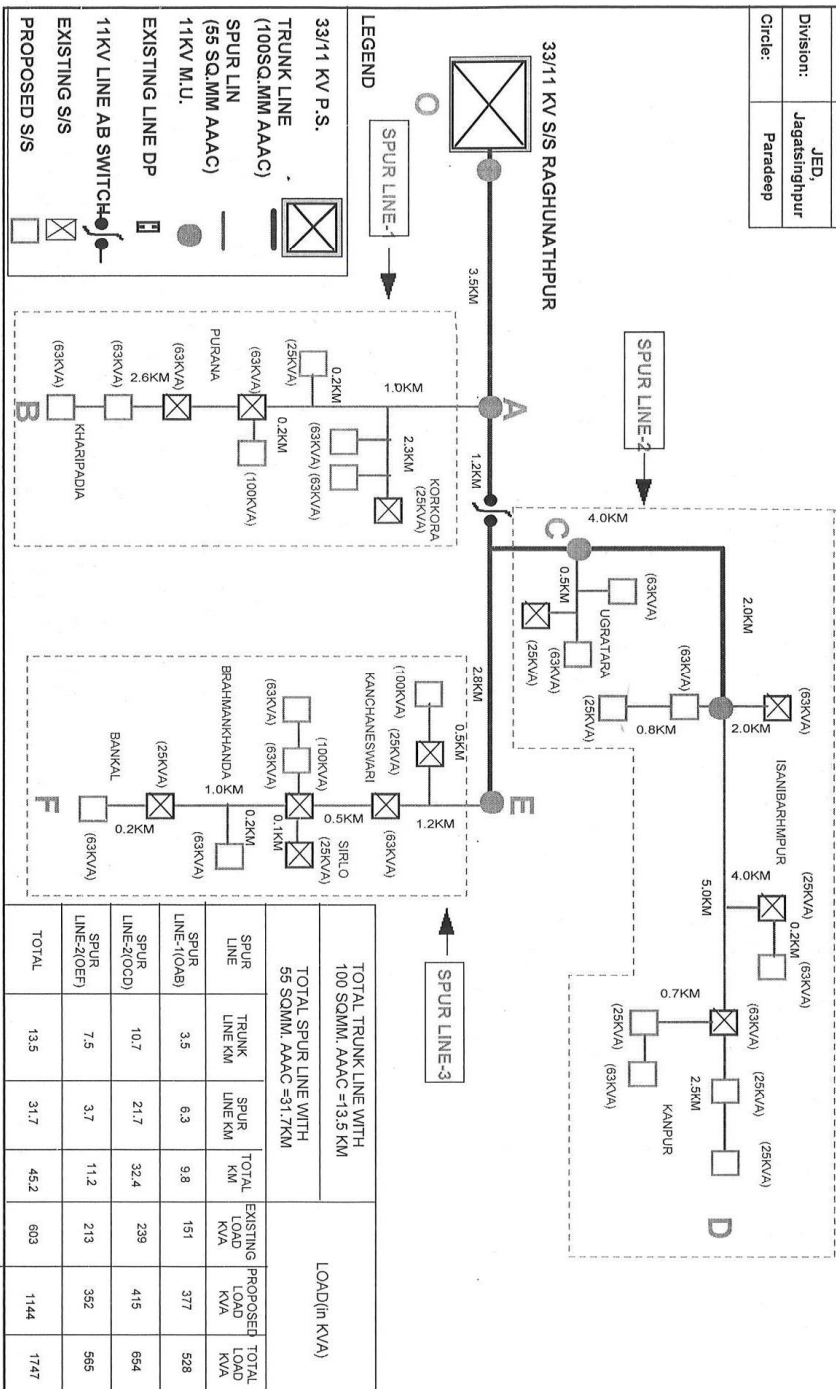
PROPOSED DEDICATED AGRICULTURE 11 KV FEEDER(DEVIL RIVER)
FROM NAUGAON 33/11 KV S/S TO GANDHANA & TENTOI UNDER JAGATSINGHPUR DISTRICT



Dr. No. CDAPP/CSU/SLD/16

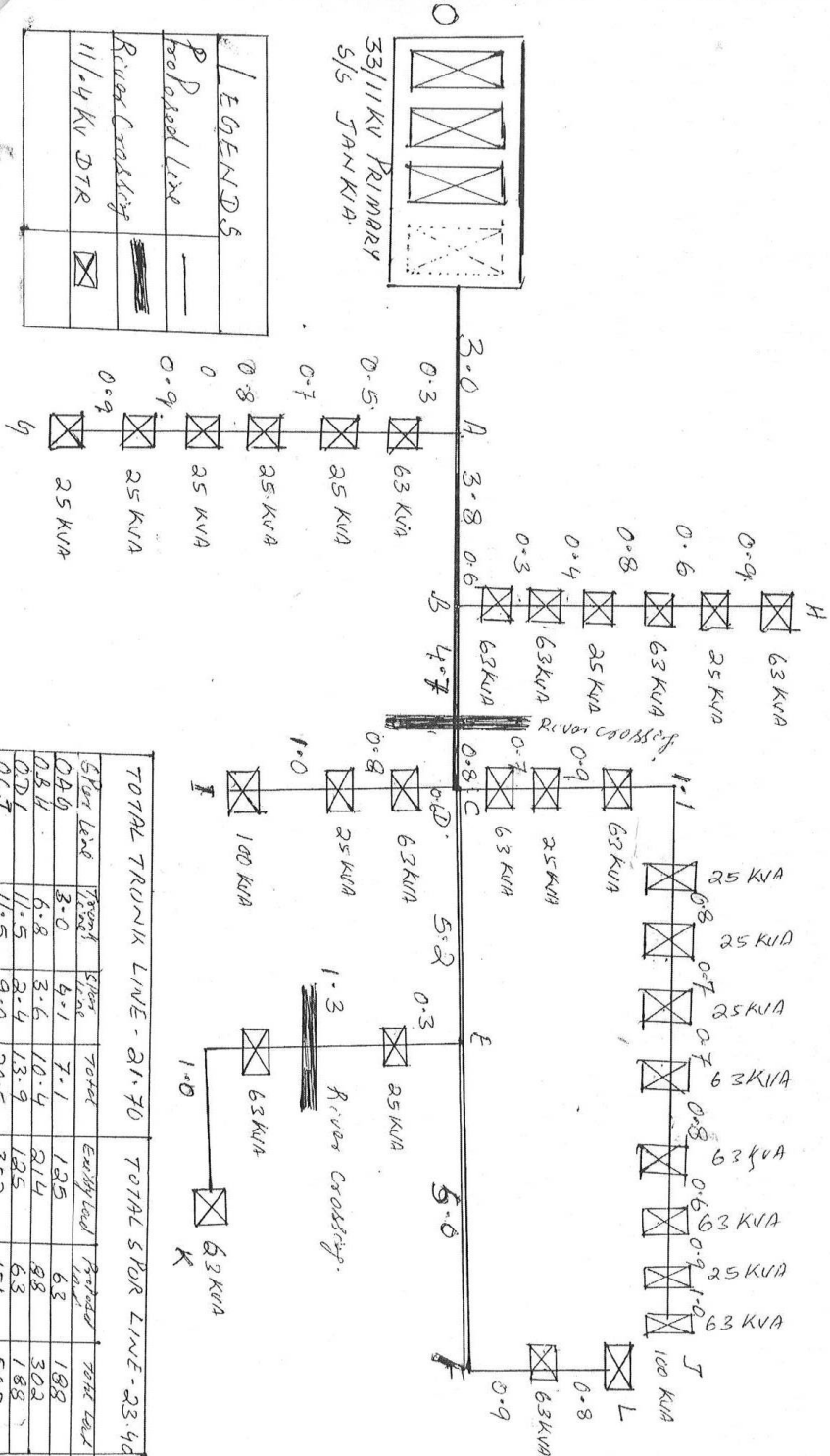
Section:	Raghunathpur
Sub-Division:	Raghunathpur
Division:	JED, Jagatsinghpur
Circle:	Paradeep

PROPOSED DEDICATED AGRICULTURE 11 KV FEEDER(MAHANADI)
FROM RAGHUNATHPUR 33/11 KV S/S TO PURANA & KANPUR UNDER JAGATSIINGHPUR DISTRICT



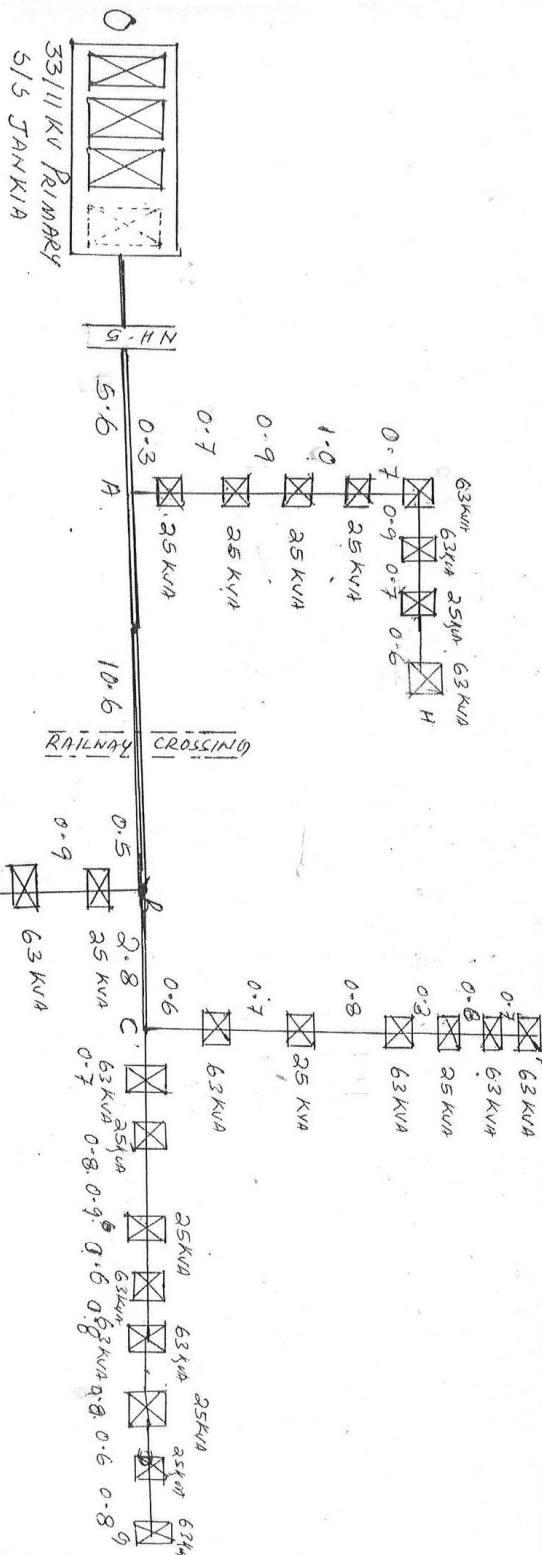
DRG No:- 0DAFF0/CESV/SLD/17


PROPOSED DEDICATED AGRICULTURE FEEDER JANKIA TO KHADIPADAR.



DATA No. 2-00AAPP/PC/11/11/11

PROPOSED DEDICATED AGRICULTURE FEEDER JANKIA TO BAKTALATA.

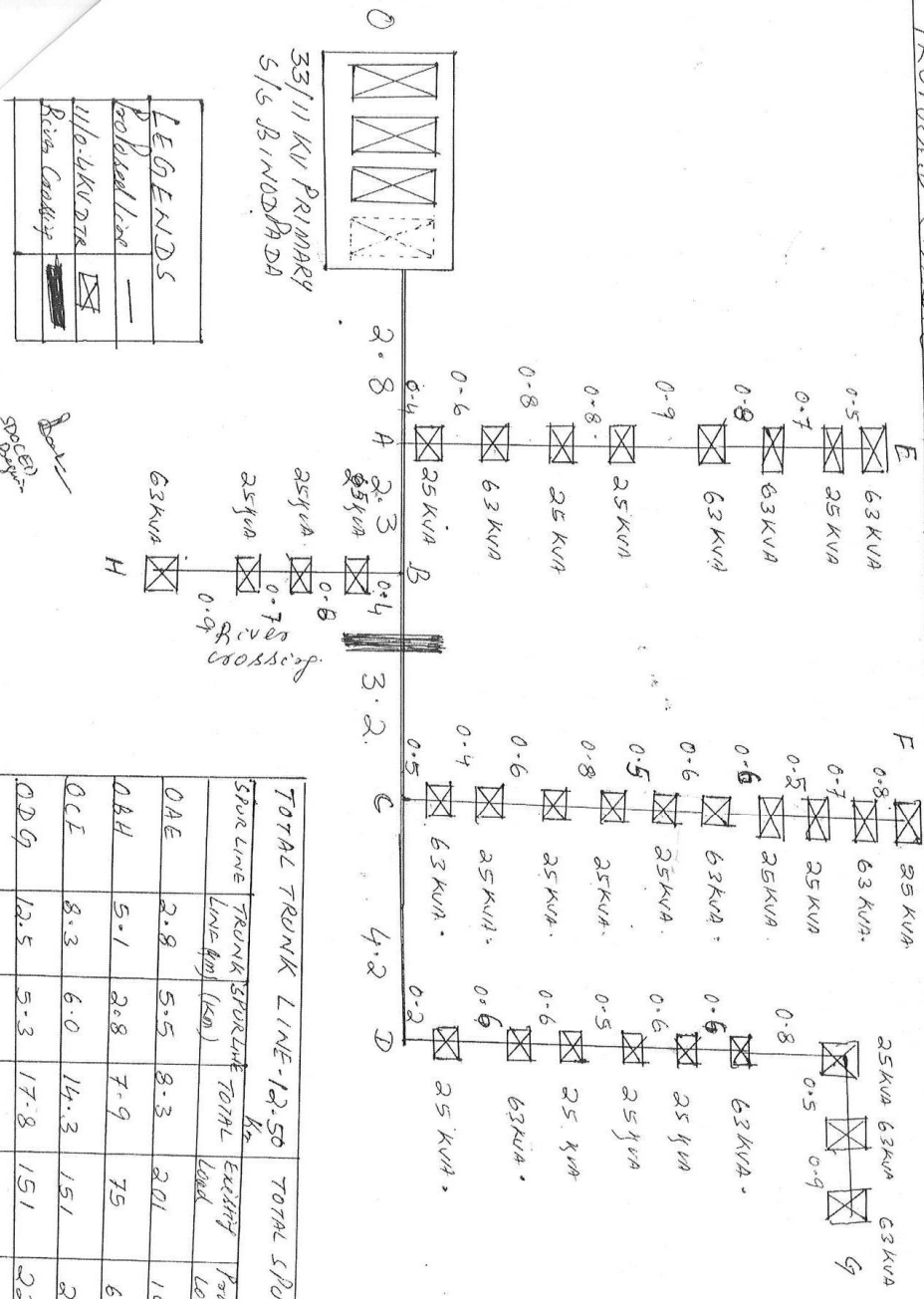


LEGENDS	
PROPOSED LINE.	—
NH CROSSING.	—
11/04 KV DTR	
Railway Crossing	— — — — —
	?

TRUNK LINE - 19.0 Km				TOTAL LOSS LINE - 18.5 Km		
Span Line	Tension Line Km	Span Line Km	TOTAL Loss Km	Estimated Loss Kg	Actual Loss Kg	
0A4-	5.6	5.8	11.4	251	63	314
0BE	16.2	2.8	19.0	176	-	176
0CF	19.0	3.9	22.9	176	126	302
0CG	19.0	6.0	25.0	239	113	352
707AC	19.0	18.5	78.3	842	302	1144

Drug No:- ODAFFP/CESU/SLD/19

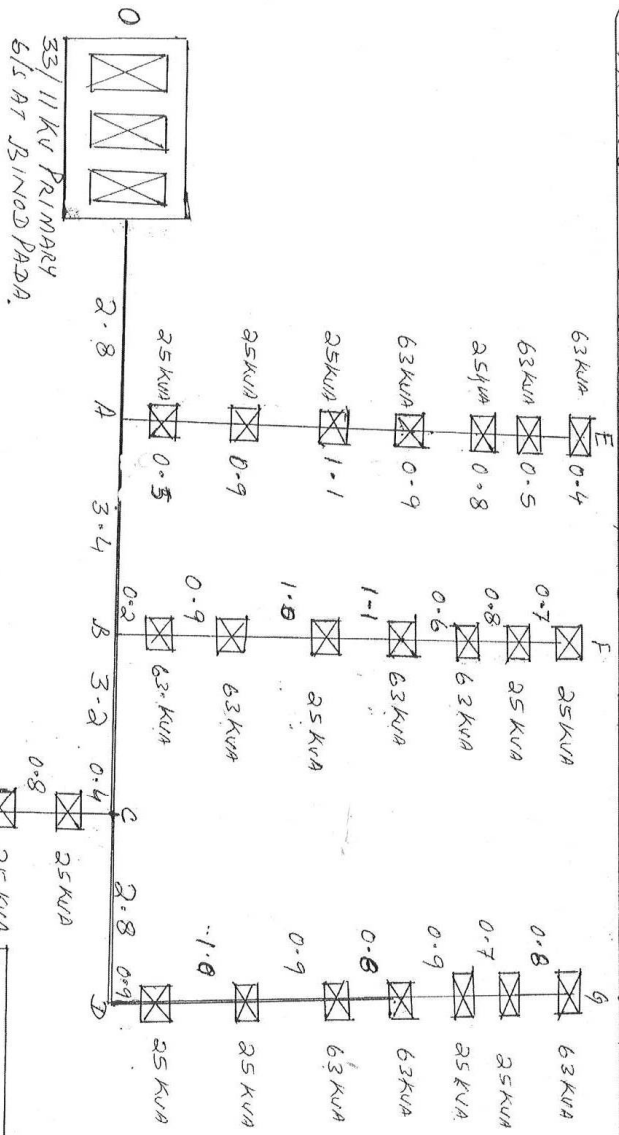
PROPOSED DEDICATED AGRICULTURE FEEDER BINDADA TO DHAKHURUMU



TOTAL TRUNK LINE - 12.50 Km			TOTAL SPUR LINE - 19.60 Km		
SPUR LINE	TRUNK (km)	TOTAL	Existing Load	Proposed Load	Total Load
DAE	2.8	5.5	201	151	352
DAH	5.1	2.8	75	63	138
OCLE	8.3	6.0	143	213	364
ODG	12.5	5.3	151	226	377
TOTAL	12.5	19.6	483	653	1231

Dng No- 0DAFFP/CESV/SLD/20

PROPOSED DEDICATED AGRICULTURE FEEDER BINODPADA TO MUDDAMANDA.



LEGENDS	
Proposed Line	—
11.4 KV DTR	⊠

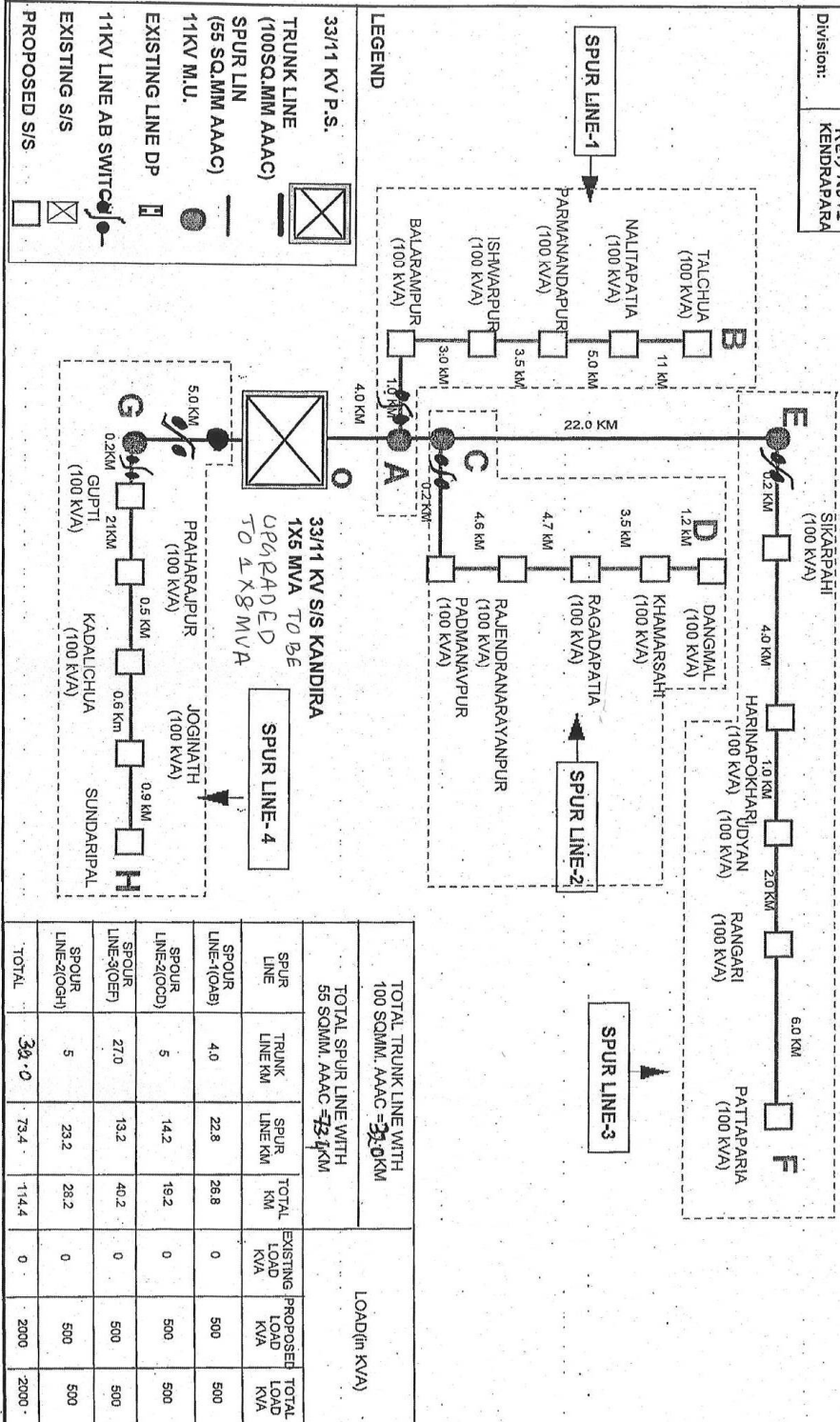
33/11 KV
DTR

TRUNKLINE - 12.20 km				SPUR LINE - 20.6 km			
SPURLINE	SPUR LINE km	TRUNK LINE km	TOTAL LINE km	Energy Loss kVA	Power Loss kW	TOTAL LOAD	
DAE	5.1	2.8	7.9	163	126	289	
DAE	5.3	6.2	11.5	63	264	327	
DAH	4.2	9.4	13.6	25	201	226	
DAH	6.0	12.2	18.2	—	289	289	
TOTAL	20.6	12.2	32.8	251	880	1131	

Dwg NO - CDHFFP/CEU/SID/21

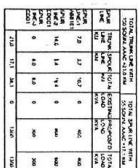
Section:	Rainagar No II
Circle:	PARADEEP
Division:	KED NO. 1 KENDRAPARA

**PROPOSED DEDICATED PISCICULTURE 11 KV FEEDER I PATTAPARIA &
FEEDER II SUNDARIPAL OF RAJNAGAR NO II SECTION UNDER KENDRAPARA DISTRICT**



DRG NO. 004444/CECU/SLD/22

PROPOSED 11 KV DEDICATED PIG CULTURE FEEDER FROM 33/11 KV S/S ~~TO~~ ^{2nd/11KV} TO JAMBOO

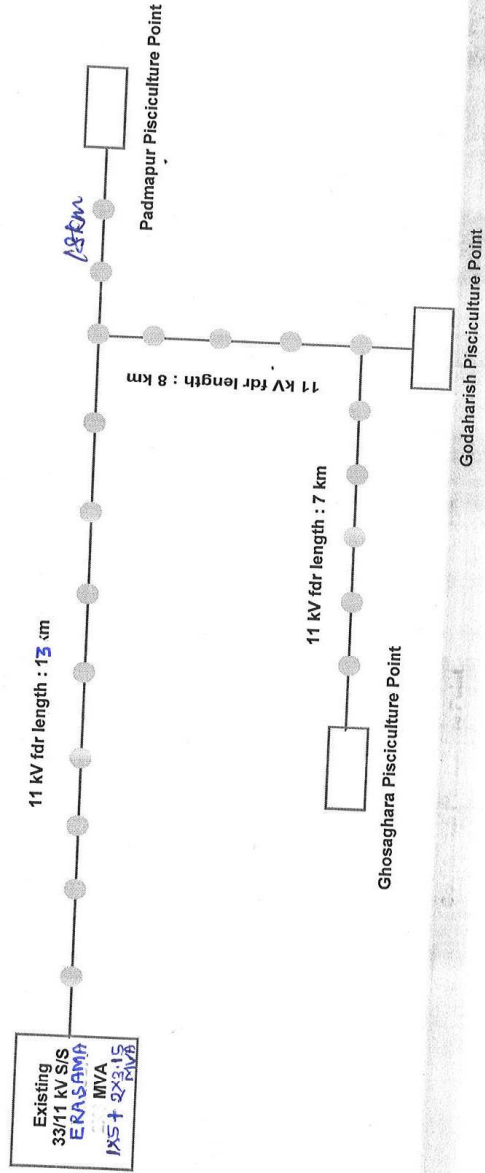


Drug No:- ODAPFP/CE5V/SLD/24



District :	JAGATSINGHPUR
Electrical :	PED
Division	
Block	ERSAMA

DEDICATED 11 KV PISCICULTURE FEEDER AT PARADEEP



SCOPE :

11KV PADMAPUR LINE LENGTH : 13 km

11KV GHOSAGHARA LINE LENGTH : 7 km

11KV GADAHARISHPUR LINE LENGTH : 8 km

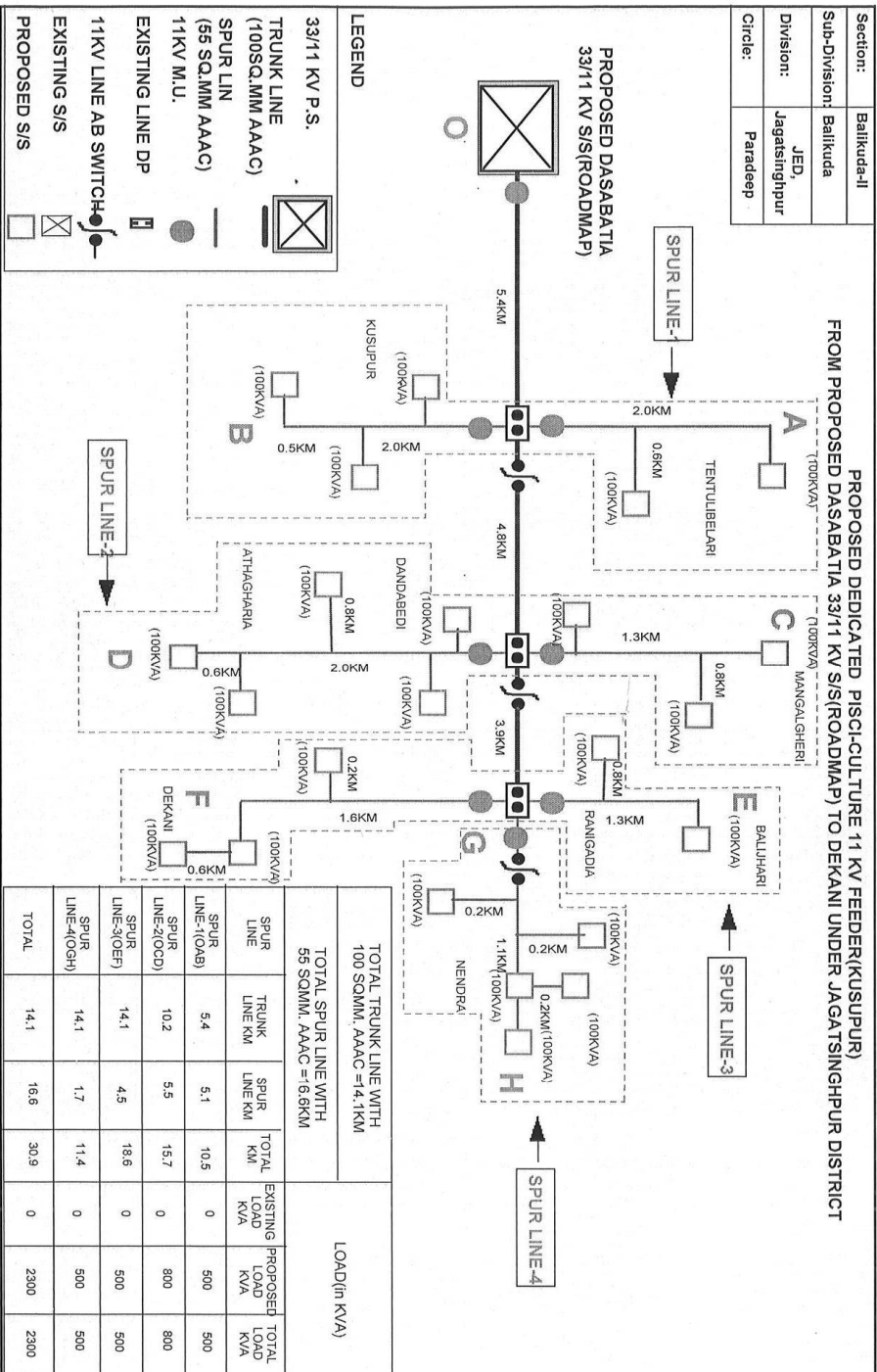
LEGEND :

	PISCICULTURE POINT
	CUT POINTS

CESU

Prepared by PRDC

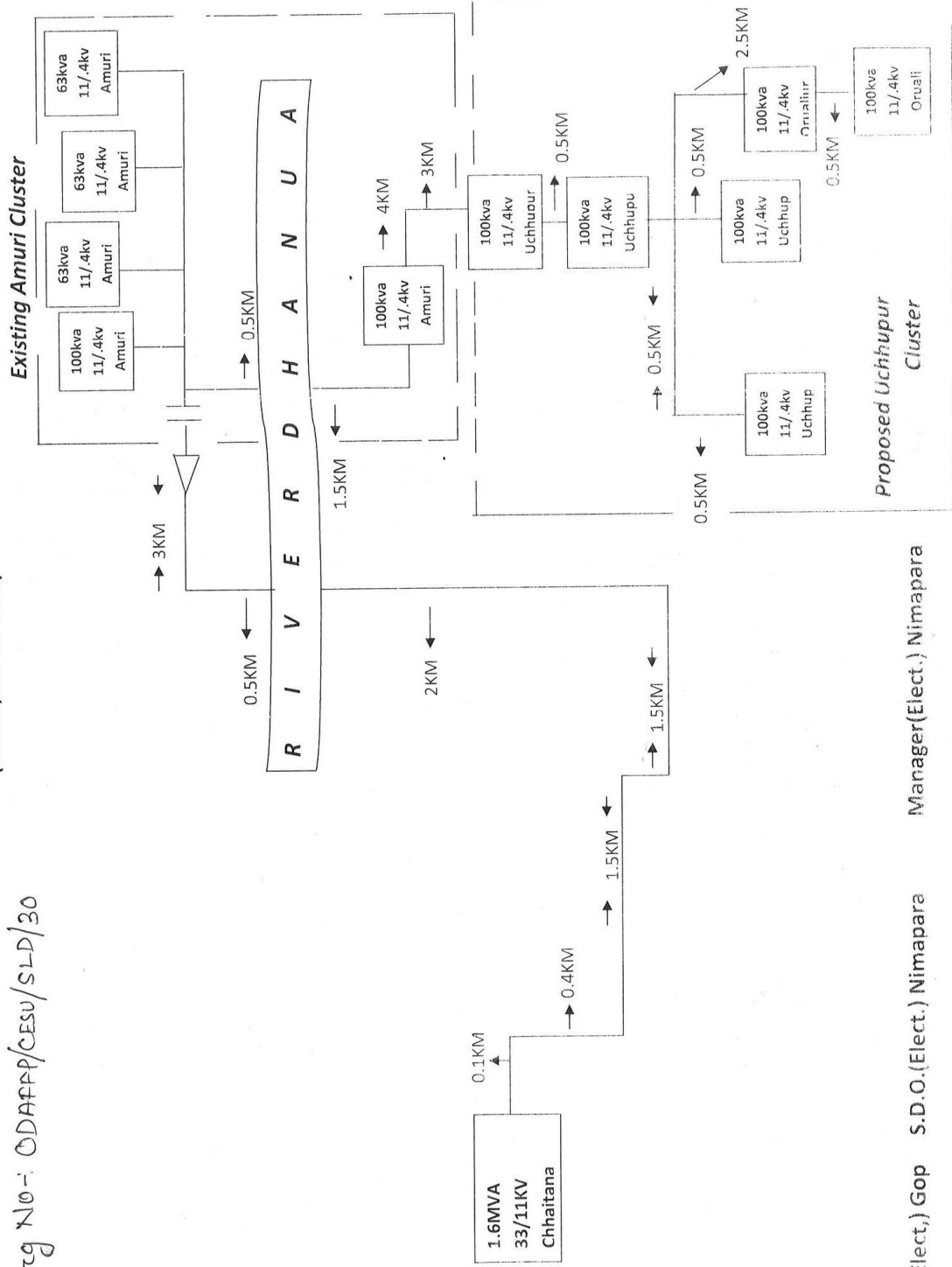
Drq No : 0DAAPP/CESU/SLD/27



DTG No: ODAFFP/CESU/SLD/28

SINGLE LINE DIAGRAM DEDICATED 11KV FEEDER FOR Pisci Culture Feeder Under Electrical Section GOP
(N.E.D., NIMAPARA)

Fig No:- ODAAPP/CESU/SLD/30



J.M.(Elect.) Gop S.D.O.(Elect.) Nimapara Manager(Elect.) Nimapara